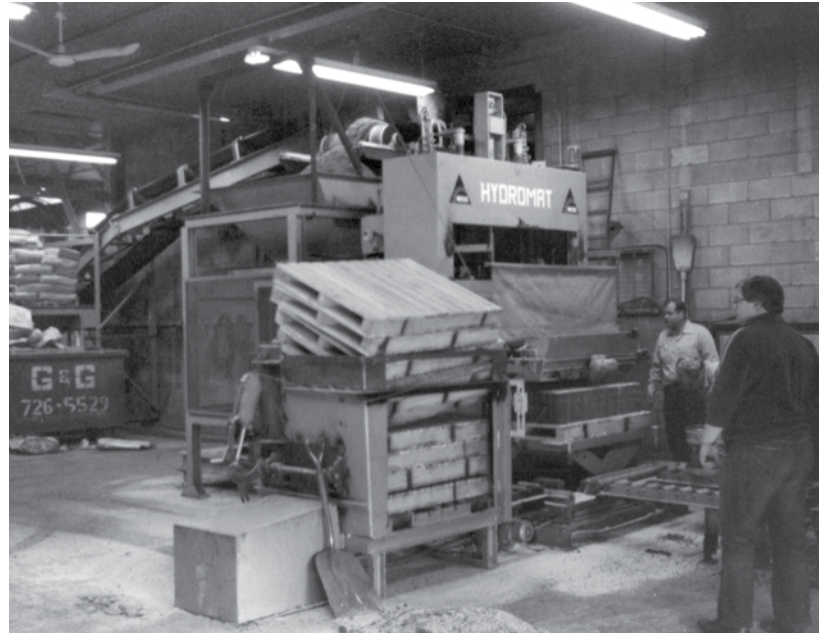


2022  
CATALOG  
OF DREAMS



**UNILOCK**<sup>®</sup> **50**  
PAVING IT FORWARD YEARS





“A beautiful outdoor space should stand the test of time, every time.”

**Ed Bryant | Unilock Founder**

November 30, 1935 - January 28, 2021







# Laying a Foundation for Inspiration

---

50 years ago, our founder had a dream. When Ed Bryant introduced the UNI-Stone paver to the North American market, he essentially established the hardscaping industry here. Since then, we have continued to innovate and grow. As a result, we are proud to have played a part in creating countless beautiful spaces, from backyard patios to landmark destinations across the continent. And we're just getting started. We know Ed would be proud.



**UNILOCK**<sup>®</sup> **50**  
PAVING IT FORWARD YEARS





**What's  
inside**



## 14 Dream

---

- 6 Unilock® Quality
- 8 Exclusive Technologies
- 10 Ultima™ & Reala™
- 12 EasyClean™ & ColorFusion™
- 14 Dream with Unilock

## 48 Products

---

- 50 Product Categories
- 52 Pavers & Slabs
- 120 Retaining Walls & Vertical Features
- 136 Steps, Treads, Coping & Caps
- 142 Making Your Project Unique

## 152 Learn & Plan

---

- 154 Coatings & Finishes
- 156 Reference Charts
- 158 Learn about the Process
- 160 Construction Process
- 162 Contractor Tips
- 164 Protect your Investment
- 166 Choice of Design Professionals
- 168 Unilock Guarantee







# Quality

## FOR US, IT'S PERSONAL

**Over 50 years ago**, our founder stumbled upon a unique little European product called the UNI-Stone. Intrigued by the benefits of this revolutionary paving method, he decided to license the product and bring the concept to North America. He purchased a basic paver machine from Europe and hired a small staff to produce the stones.

In those early days, most sales of Unilock were to large-scale commercial properties and streetscapes. Any lapse in quality would be costly and would jeopardize

our owner's personal reputation, so quality was of paramount importance.

From these humble beginnings, through to the multinational company we are today, Unilock has remained a family-owned company that puts quality first. For us, it's not just a matter of dollars and cents, it's our personal reputation that's on the line.

Homeowners, Contractors, Landscape Designers and Architects across North America know they can rely on us to supply them with top quality product every time.



Today we operate 13 manufacturing plants across North America.



UNI-STONE™

The first Unilock press produced a humble 817 square feet of pavers a day.





# EXCLUSIVE

**UNILOCK** TECHNOLOGIES

**“Innovation is really what makes this company... Just about every new product technology that’s come into North America we developed and brought in.”**

~ Ed Bryant, Unilock Founder

---

For the past 50 years, Unilock has enjoyed close connections to European companies that keep us on the leading edge of product design and manufacturing processes. While other companies follow in our footsteps, Unilock continues to pave it forward with a growing history of industry firsts.



# Over 50 years of Innovation

<p><b>1972</b></p> <p><b>UNILOCK INTRODUCES THE FIRST PAVING STONE TO NORTH AMERICA.</b></p> <p>Founder Ed Bryant kick-started the entire industry, securing a license to manufacture and sell the iconic UNI-Stone from Europe.</p>  <p>UNI-STONE™</p>	<p><b>1991</b></p> <p><b>FIRST PERMEABLE PAVER</b></p> <p>We were the first to manufacture permeable pavers to address growing concerns around stormwater management. Today we have more permeable paver design options for residential and commercial projects than anyone.</p>  <p>UNI ECO-STONE™</p>	<p><b>1992</b></p> <p><b>FIRST FACEMIX</b></p> <p>Before Unilock Series, all pavers in North America were thrumix. We were the first to introduce facemix technology, now known as EnduraColor™. Some manufacturers are trying to market facemix as something new, but we've been selling it for more than twenty-five years.</p>  <p>SERIES™</p>	<p><b>1993</b></p> <p><b>TUMBLLED PRODUCTS</b></p> <p>The idea of 'antiquing' pavers for a timeworn look was something that many people said would never fly. But Brussels Block quickly became the most popular product in our line, leading to Brussels Dimensional wall, and scores of imitators.</p>  <p>BRUSSELS BLOCK™</p>
<p><b>2004</b></p> <p><b>FIRST ULTIMA CONCRETE</b></p> <p>Unilock remains the only manufacturer in North America with this technology. Ultima™ Concrete makes our Elegance products second-to-none in beauty and durability.</p>  <p>Look for our <b>ELEGANCE</b> Product line-up.</p>	<p><b>2007</b></p> <p><b>FIRST COATED PRODUCT</b></p> <p>Unilock introduced Umbriano as the first product with EasyClean™ stain resistance technology. Other factory sealed products have followed since then.</p>  <p>UMBRIANO™</p>	<p><b>2018</b></p> <p><b>PATENTED U-CARA WALL</b></p> <p>The U-Cara Multi-Face Wall was developed to deliver unlimited design flexibility with a single wall system that brings EnduraColor finishes to vertical features. <b>Only Unilock holds the patent for this product.</b></p>  <p><b>U-CARA</b> US PAT. 9,453,341</p>	<p><b>2022</b></p> <p><b>THE NEXT 50 YEARS</b></p> <p>This year marks our 50<sup>th</sup> anniversary as the industry trend-setter and we're investing more than ever before. Developing new products, processes and technologies that will pave the way forward for another 50 years.</p>  <p><b>UNILOCK</b> PAVING IT FORWARD</p>



# Ultima™



*Courystone*

Only Unilock has the technology in North America to manufacture Ultima Concrete resulting in pavers **up to four times stronger** than poured concrete. With Ultima, the look you purchase is the look that will last.

---

Ultima Concrete is a key ingredient in the **timeless elegance** of our Elegance collection of premium pavers.

## » What makes Ultima concrete so strong?

In a word, fluidity. During manufacturing, we use as little water as possible while enhancing the fluidity at the drying stage, resulting in a form that self-compacts at the chemical level. The result is an extraordinary product that is unlike anything you'll find outside of Unilock.

### **With Ultima**

*Unilock Town Hall® pavers are built to last*



### **Without Ultima**

*Deteriorating brick pavers exposed to deicing salts*



# Reala™

When it comes to creating **realistic textures** that are indistinguishable from brick, cobblestone, or flagstone, there is no room for compromise.

Any paver meant to imitate a classic building material needs to embody its look, its feel, and its strength. At Unilock, we've been capturing all three since **2004** with our unique Reala technology.



## ➤ How do we achieve a random appearance?

First, we cast a multitude of pavers from molds of actual flagstone, brick, and cobblestone. Then we randomize the casting process. With so much variation between molds, we can then ensure that any paver installation avoids repetition, no matter how large or small the project.

Utilizing REALA technology, a multitude of natural stone surfaces, brick and historic cobblestones are cast to create a **wide variety of authentic textures** with consistent dimensions that are **more cost efficient to install**.



Nothing protects pavers from stains like EasyClean.



Unlike after-market sealers which merely coat the top, EasyClean goes beyond the surface and becomes integral to the product during manufacturing. The result is enhanced surface color, and protection from stains.

<b>EASYS CLEAN ADVANTAGES</b>
Pavers are pre-sealed at the factory
Enhanced resistance to weathering
Reduced dirt absorption
Stains from leaves, coffee, ketchup, mustard, wine and BBQ oils are easier to remove

**What does this mean for stains?**

Any spill that does manage to land on an EasyClean paver can be quickly and easily wiped away - no deep scrubbing or heavy cleaners needed.

*Pavers shown on left hand side are Thrumix pavers without EasyClean. Pavers shown on right hand side are EnduraColor pavers with EasyClean Stain Resistance Technology.*



# ColorFusion™

The look of natural granite is achieved when color and granite particles are randomly dispersed using proprietary ColorFusion technology to achieve a unique mottled surface.



*ColorFusion also available on our U-Cara® Multi-Face Wall System.*



## » Why do people love granite?

It's strong, beautiful and has an earthy, timeless look. Unfortunately, it's also expensive, extremely heavy and can be difficult to install. ColorFusion brings the look of granite to Umbriano for gorgeous, barefoot-friendly surfaces. No granite aesthetic is off-limits with ColorFusion pavers.

ColorFusion pavers are made with the same durable concrete and fortifying manufacturing processes that make Unilock pavers last for decades. Our commitment to beautiful, long-lasting hardscaping products is what built our reputation, and we honor that commitment through continued innovation.

# Dream

---

**The elements  
of design begin  
with a dream of  
what's possible.**

Envision an outdoor space where the inspired use of patterns, textures and shapes not only creates design-envy, but elevates your world in the most beautifully functional way.





Umbriano Summer Wheat





**Pavers:** Series™  
(Black Granite) with Series  
custom color blend and  
custom color rounded inlays

**Wall:** U-Cara® Smooth  
(Opal Blend) with U-Cara  
Series (Black Granite) accents

A bold driveway design is disrupted by a half circle and accented with dark pavers that complement the strong outlines of this ultra-modern home.





Beacon Hill™ Smooth (Granite Mist) with Series™ (Black Granite) accent



### Accent on Rectangles

Around back, the drama continues with large-scale slabs in the backyard patio and a linear wall design, both punctuated with black accents. The color tones mirror the shades of the home.





Richcliff® (Dawn Mist and Pebble Taupe) with Courtstone® (Basalt) accent and Ledgestone™ (Buff) coping

Classically elegant and strikingly detailed riven surface texture makes Richcliff the perfect match for this arts and crafts style home.







### **Warm Welcome**

An inset border of Unilock Courtstone pavers gives extra dimension and helps visually define broad steps leading up to the front door.





## Cutting Edge

Pavers are laid on the diagonal and boldly outlined with a multi-layered border, which accents the planting bed and garden walls.





Umbriano® (Summer Wheat) with Town Hall®  
(Burnt Clay) accent and Natural Stone (Indian Coast) step



Take a seat at the table  
in the outdoor dining  
area, cleverly defined by  
a mix of 90-degree and  
45-degree paver patterns  
and striking borders.



## Entertaining Ideas

From a complete outdoor kitchen to distinct areas for dining, lounging, sunbathing and mingling over cocktails, this is an entertainer's dream. Architectural elements such as low walls, planters, pillars, a custom fireplace, and water features add to the contemporary vibe.



**Pavers:** Umbriano® (French Grey) with Town Hall® (Basalt) accent

**Walls:** Lineo™ Dimensional Stone (Granite Blend) with Midnight Charcoal accent

**Fireplace:** Lineo Dimensional Stone (Granite Blend) with Series™ (Black Granite) accent

**Steps & Coping:** Natural Stone





The look of natural granite pavers manufactured with EasyClean™ stain protection means the occasional party spill is easily wiped clean.









Smooth minimalistic slabs placed in a running bond pattern are contrasted by the graphic linear pattern used in vertical elements.

**Pavers:** Beacon Hill™ Smooth (Opal Blend) with Copthorne® (Basalt) accent

**Fire Feature and Grill Island:** Lineo™ Dimensional Stone (Sandstone, Midnight Charcoal and Granite Blend - blended on site)

**Seat Wall:** Lineo Dimensional Stone (Sandstone, Midnight Charcoal and Granite Blend - blended on site) with Copthorne (Basalt) accent and Universal coping (Light Grey)



## Graphic Design

Make your backyard the envy of the neighborhood with a daring combination of paver color tones and finishes. This entertainer's delight includes an outdoor kitchen, a fire table "room" with u-shaped seating walls, a large paver patio area to ground the dining, seating area, and an above-ground pool.









## Command Your Place in the Sun

Smooth slabs in muted tones create an elegant pool deck that is cool underfoot, and lets the infinity pool take center stage. Paver slabs surrounded by turf form a popular mosaic pattern and unique “carpeting” for adjacent seating areas.



**Pavers:** Beacon Hill™ Smooth (Opal Blend) with Cophthorne® (Basalt) accent  
**Pillars and Steps:** Brussels Dimensional Stone® (Mahogany) with Brussels Fullnose™ (Mahogany) coping  
**Slabs:** Umbriano® (Winter Marvel)







## Borderline Brilliance

A driveway need not be boring. A clever combination of two paver products and the use of bold border treatments defines this unique driveway, which even continues inside the garage for an extra touch of awesome.

**Pavers:** Umbriano® (Summer Wheat) with Town Hall® (Basalt) walkway and accents

**Garden Wall:** U-Cara® (Summer Wheat) with Natural Stone (Black River) coping



The garden walls are created with coordinating U-Cara fascia panels to give the entire project a tight cohesive look.





A driveway paved with large rectangular pavers placed at a 45-degree angle meets a soft curve at the garage door for a bit of the unexpected every day.





**Pavers:** Copthorne® (Basalt) with Richcliff® (Dawn Mist) and Beacon Hill™ Smooth (Opal Blend) border  
**Step Treads:** Natural Stone (Stone Cliff Grey)



### Anything but Everyday

Pavers in a classic herringbone pattern fill in a gently curving path helping to define walking areas and lead guests to the front door. The darker tones match the driveway pavers for a smooth, consistent look.









## Modern Minimalism

A sparkling pool surrounded by smooth, Umbriano pavers aspire to create a clean, ultra-modern summer escape. Large format slabs on the lawn lead guests to the shade of a canopied eating area.

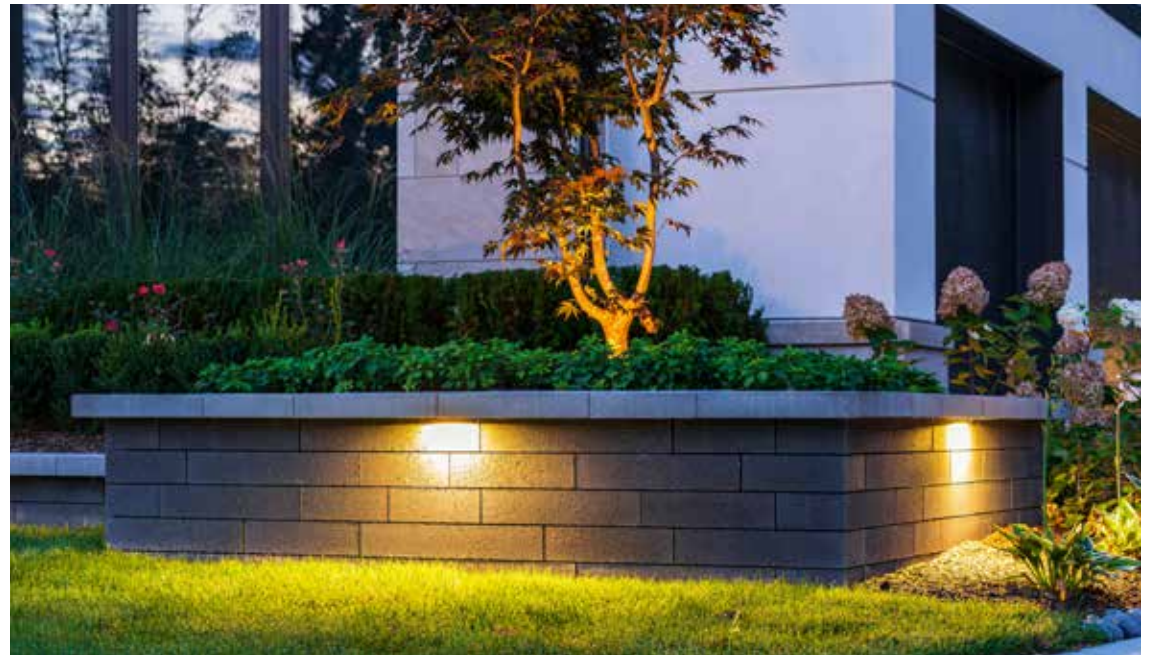
Umbriano®  
(Winter Marvel)







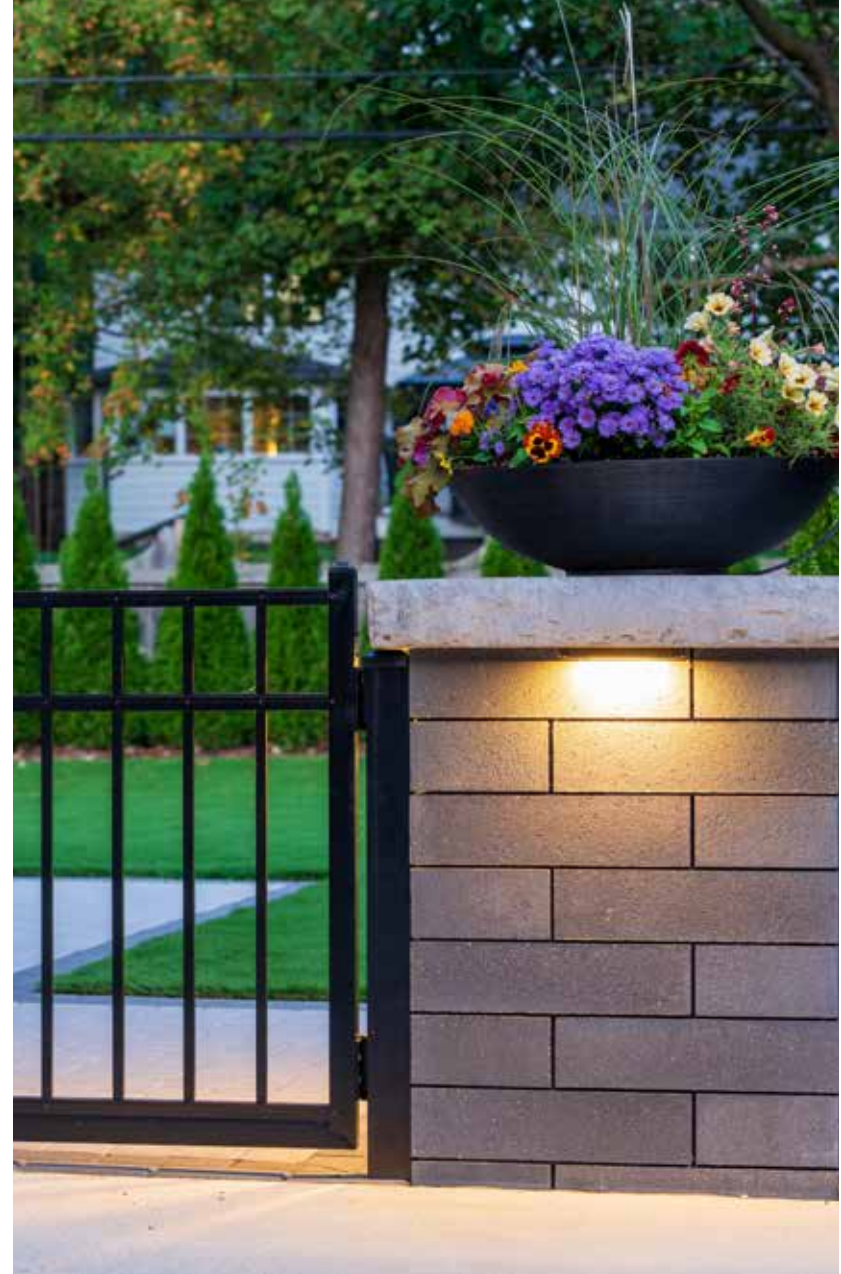
A palette of light-colored pavers allows darker vertical features like the fire table to stand out.





**Pavers:** Beacon Hill™ Smooth (Opal Blend) with Beacon Hill Smooth (Midnight Charcoal) accent

**Fire Feature and Raised Patio:** Lineo™ Dimensional Stone (Midnight Charcoal) with Universal coping (Light Grey) and steps



## Extend the Season

Raise the bar on your backyard patio by lifting it off the lawn. The clean architectural lines of this home set the tone for this simple but stunning raised patio with corner gardens.





The silky, matte texture and unique speckled surface of Arcana catches the sparkle from the refreshing water.





**Pavers:** Arcana™ (Modena) with Series™ (Black Granite) accent and Brussels Fullnose™ (Limestone) coping  
**Grill Island:** U-Cara® Smooth (Granite Mist) with U-Cara Series™ (Black Granite) accent



## Oasis of Calm

There is so much to appreciate in this serene setting. Large-format pavers laid in a running bond pattern ground the relaxed, minimalist design of the pool area. When you feel the need for company, a complete outdoor kitchen makes this backyard oasis an entertainer's dream.



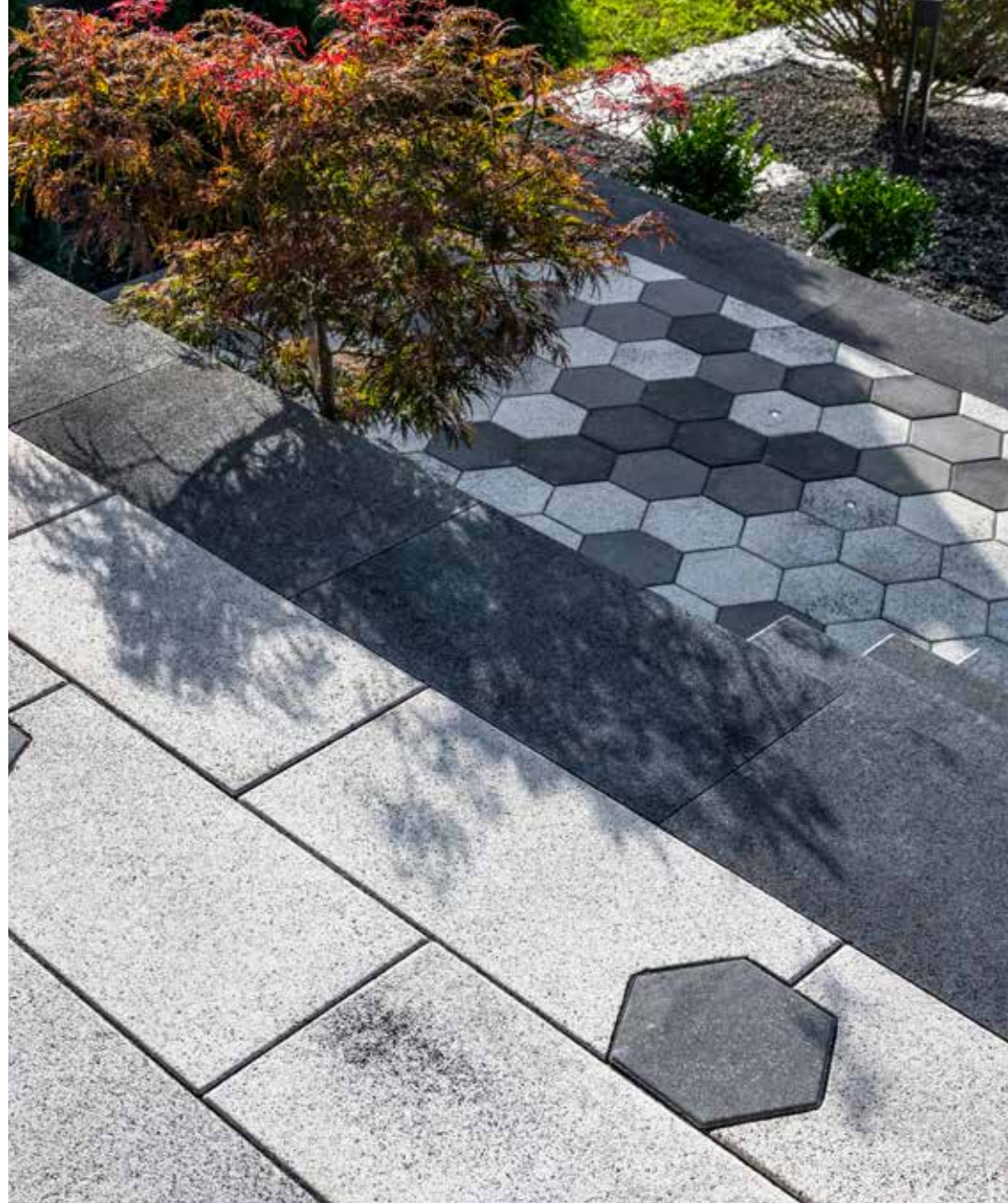




Ignite curbside conversation with a pixelated design of light and dark grey pavers.

**Pavers:** Series™ (Black Granite, Glacier and Mountain Mist)

**Entryway and Steps:** Umbriano® (Winter Marvel) with Umbriano Hex (Midnight Sky and French Grey) accents with Umbriano coping (Midnight Sky)



### Put a Hex on It

Wide platform steps outlined with a dark border and accented with hexagon pavers complement the driveway.







Contrasting old with new is always a delightful surprise as demonstrated with the use of trendy hexagon-shaped pavers edged with rustic dark brick.

**Pavers:** Town Hall® (Basalt) and Umbriano® Hex (Winter Marvel)

**Entryway and Stepping Stones:** Umbriano® (Winter Marvel) with Natural Stone (Black River) coping and steps



### All the Angles

This driveway has the corner on geometric design thanks to the bold pairing of rectangular pavers with modern hexagon shapes. Rectangular pavers create visual relief leading up to the porch. A walkway of large format paver slabs adds another graphic element to the composition of this unique front yard.



## Escape Artistry

With a minimalistic design and cues borrowed from the home's monochromatic shades, this paver deck creates seamless flow to the serenity of the pool.

Beacon Hill™ Smooth (Opal) with  
Beacon Hill Smooth (Midnight Charcoal) accent





## Old World Meets New

Some classics never lose their charm. Enhance a home's modern architecture with an authentic cobblestone driveway for blended beauty that never fades.



Courtstone® (Basalt)







A blending of natural stone and historic brick textures laid in a variety of patterns makes this project a visual feast.





Richcliff® (Dawn Mist) with Copthorne® (Basalt) paver rug and Courtstone® (Basalt) accents and Natural Stone (Stone Cliff Grey) slabs



### The Difference is in the Details

Taking its cue from the warm tones of the home, this elevated patio embraces its guests with timeless charm and comfort. The cool grey tones of the pavers complement the wood features and mosaic metal fencing.





AWARDS OF  
**EXCELLENCE**

## Kasty Landscape shows its strength in design and workmanship

Winner of the 2021 Unilock  
Awards of Excellence Best in Show



“There is no greater  
satisfaction than  
to see my client’s  
dreams come true.”

*Alex Kastlein*  
KASTY LANDSCAPE GROUP







“We needed a contractor who could take our vision and turn it into reality. We really felt that Alex was on our team. He listened to us and was able to transform our yard into the outdoor space we’ve dreamed about.”

### *Homeowners*

YASMAN & WOLFE



**Pavers:** Beacon Hill™ Smooth (Opal Blend) with Series™ (Black Granite) accent and Promenade Plank™ Paver inlays

**Wall:** U-Cara® Smooth (Opal Blend) with U-Cara Series (Black Granite) accent

**Step Treads & Coping:** Natural Stone

Looking beyond the outdated features, owners Yasman and Wolf had a vision of what they wanted for their outdoor space. But after a disappointing first design from a competitive landscaping company, Yasman reached out to Alex of Kasty Landscape Group.

For Alex, collaboration is key to providing a tailored experience. The first thing he did was bring them to the Unilock Outdoor Idea Center where their vision began to take shape. Excited and inspired, Yasman said she wanted an outdoor space that reflected her style, an extension of their home’s indoor space. Something modern but not understated.

Nestled in lush surroundings, the private backyard includes a complete outdoor kitchen, multiple seating and eating areas, water and fire features, lighting and softscaping. The stunning 1,400 square foot backyard design was constructed with Unilock Promenade pavers, taking advantage of the many shapes and finishes available in the sleek, contemporary line. The U-Cara wall that helps to define the space incorporates a splash of Series accents.

The design is carried to the front of the home, where the bold design caused quite a stir in the neighborhood leading to two more projects for the Kasty Landscape Group.



# Products

---

**Capture the eye  
with exclusive  
products that  
are style-forward  
and functional in  
the extreme.**

From time-worn cobblestone to modern, linear pavers, our product array takes you beyond the horizontal to garden walls, pillars, steps, fire tables and fountains. Discover a look that is unmistakably you - undeniably Unilock.





Town Hall™



# Unilock Product Categories

---

## CLASSIC

Our budget-friendly, Unilock Classic pavers and walls are manufactured to exceed ASTM standards for quality and strength. Available in classic shapes and styles, these products utilize a traditional product mix of large and small aggregates that is consistent from top to bottom with color mixed throughout.



## ENDURACOLOR™

The refined surface of Unilock EnduraColor products is achieved with a two-step manufacturing process that combines a base of coarser aggregates for a stronger foundation with concentrated color and wear-resistant finer aggregates on top. This process protects the surface from the appearance of fading over time because the top layer prevents large, lighter color aggregates from ever showing through. Now, with U-Cara®, walls are available with EnduraColor too!

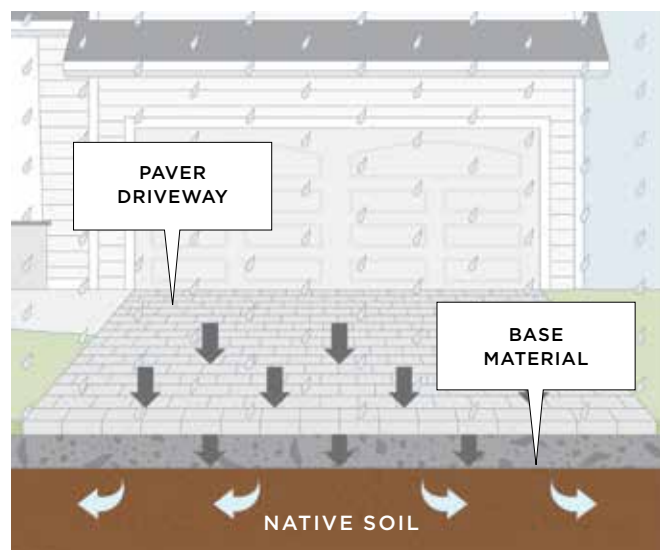


## ELEGANCE®

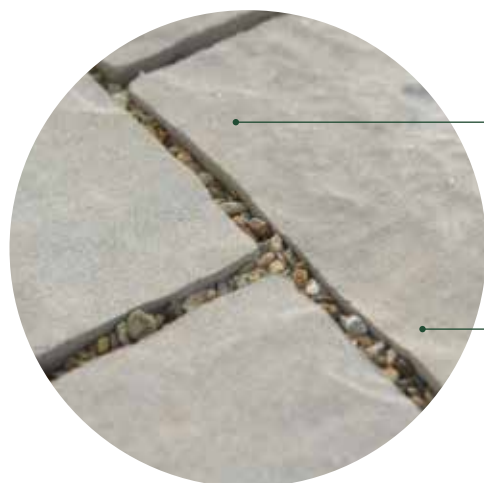
Deep, rich colors and a multitude of unique Reala™ textures combine to deliver the timeless beauty of Unilock Elegance. From the timeworn look of European cobblestones, to the classic luxury of riven natural stone slabs, our Elegance collection offers styles you can't get anywhere else. Thanks to Ultima™ Concrete, the look you purchase is the look that will last, with up to **4x the strength of poured-in-place concrete.**



## PERMEABLE



Developed in response to growing concerns around stormwater management, permeable pavers allow rainwater to flow between the joints and back into the subsoil. This provides a dual “green” benefit: it reduces the amount of water sent to storm sewers, and instead provides extra moisture to surrounding plant material.



The pavers used in a permeable installation look similar to traditional pavers, but are made with special spacer bars that create a wider joint.

Special materials are used in the joints and in the permeable base below, to encourage water to flow through and reach the subsoil.

Using permeable pavers will reduce puddling on the pavement when it rains, and decrease ice build-up in winter.



LOOK FOR THIS PERMEABLE ICON IN OUR UNILOCK PAVER COLLECTION.

## The Product is Roughly 20% of the Total Cost

**BUY THE BEST!**

The major cost of your project is the prep work and installation - not the cost of the product (the ratio is approximately 20% product / 80% installation).

**Don't compromise!** Choose the product you love to get the maximum enjoyment from the investment you've made below the surface.

### CONSTRUCTION CROSS SECTION



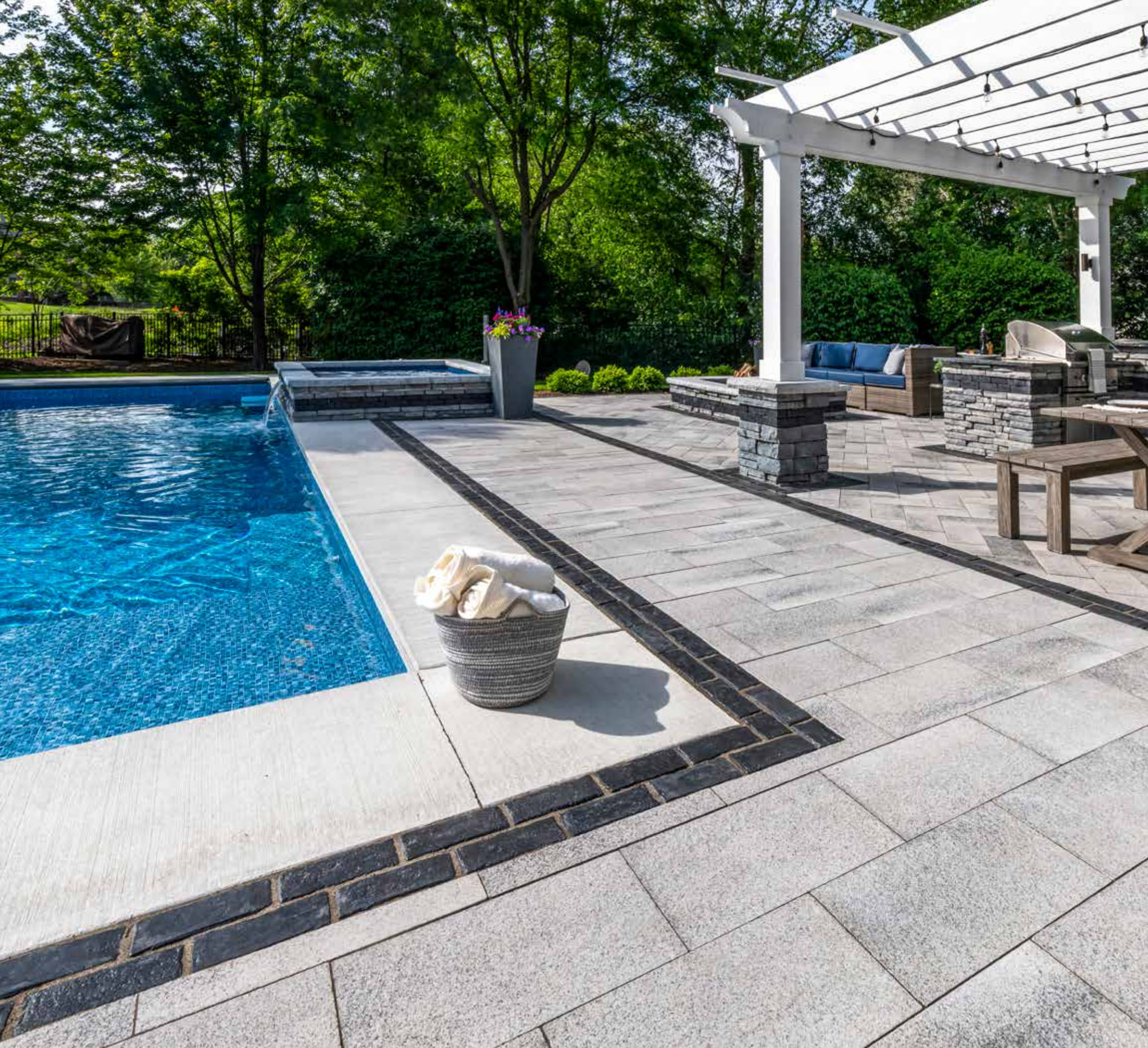
### PROJECT COST BREAKDOWN

**20%**  
Pavers

**80%**

Excavation  
Gravel Base  
Labor









# Pavers & Slabs

From traditional shapes and textures to the most advanced technology and unique styles. The choices available in our paver collection are unrivaled in the industry.

Umbriano® (Winter Marvel) with Town Hall® (Basalt) accent







## CLASSIC

# Windermere<sup>®</sup> Flagstone

---

### ADVANTAGES

#### DRIVE FRIENDLY

Can handle vehicular loads  
Ask about our base stabilization system



**CLIFFSIDE GREY**



**GRANITE BLEND**



**IRISH COAST**



**LARGE RECTANGLE**  
14 $\frac{1}{16}$  x 21 $\frac{1}{4}$  x 2 $\frac{3}{4}$ "  
360 x 540 x 70mm



**SQUARE**  
14 $\frac{1}{16}$  x 14 $\frac{1}{16}$  x 2 $\frac{3}{4}$ "  
360 x 360 x 70mm



**SMALL RECTANGLE**  
7 $\frac{1}{8}$  x 14 $\frac{1}{16}$  x 2 $\frac{3}{4}$ "  
180 x 360 x 70mm

**3 UNIT RANDOM BUNDLE**

Cliffside Grey with Brussels Block<sup>®</sup> (Sandstone) accent

Color selection should be chosen from actual samples.







## CLASSIC

# Windermere<sup>®</sup> Smooth

### ADVANTAGES

#### DRIVE FRIENDLY

Can handle vehicular loads  
Ask about our base stabilization system



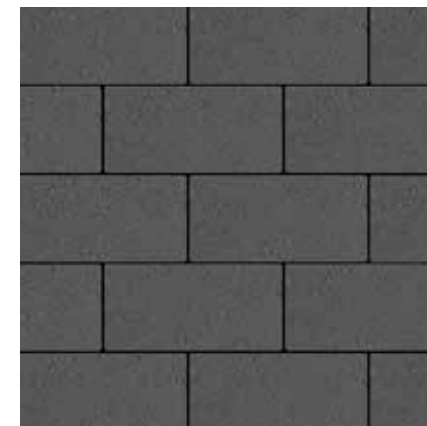
**CLIFFSIDE GREY**



**GRANITE BLEND**



**IRISH COAST**



**MIDNIGHT CHARCOAL**  
Small Rectangle Only



**LARGE RECTANGLE**  
14<sup>1</sup>/<sub>16</sub> x 21<sup>1</sup>/<sub>4</sub> x 2<sup>3</sup>/<sub>4</sub>"  
360 x 540 x 70mm



**SQUARE**  
14<sup>1</sup>/<sub>16</sub> x 14<sup>1</sup>/<sub>16</sub> x 2<sup>3</sup>/<sub>4</sub>"  
360 x 360 x 70mm



**SMALL RECTANGLE**  
7<sup>1</sup>/<sub>8</sub> x 14<sup>1</sup>/<sub>16</sub> x 2<sup>3</sup>/<sub>4</sub>"  
180 x 360 x 70mm



**SMALL RECTANGLE**  
7<sup>1</sup>/<sub>8</sub> x 14<sup>1</sup>/<sub>16</sub> x 2<sup>3</sup>/<sub>4</sub>"  
180 x 360 x 70mm  
Midnight Charcoal only

3 UNIT RANDOM BUNDLE

Granite Blend with Midnight Charcoal accent

Color selection should be chosen from actual samples.





**CLASSIC**

**Brussels Block®**

**ADVANTAGES**

**ANTIQUED FINISH**  
Distressed, timeworn finish

**DRIVE FRIENDLY**  
Can handle vehicular loads  
*Ask about our base stabilization system*



**LIMESTONE**



**MAHOGANY**



**SANDSTONE**



**COFFEE CREEK NEW**



**MIDNIGHT CHARCOAL**  
XL, STANDARD AND  
FULLNOSE ONLY



**XL STONE**  
8<sup>1</sup>/<sub>5</sub> x 13<sup>2</sup>/<sub>3</sub> x 2<sup>3</sup>/<sub>4</sub>"  
208 x 348 x 70mm



**STANDARD STONE**  
6<sup>4</sup>/<sub>5</sub> x 8<sup>1</sup>/<sub>5</sub> x 2<sup>3</sup>/<sub>4</sub>"  
173 x 208 x 70mm



**HALF STONE**  
4<sup>1</sup>/<sub>8</sub> x 6<sup>4</sup>/<sub>5</sub> x 2<sup>3</sup>/<sub>4</sub>"  
104 x 173 x 70mm



**FULLNOSE COPING**  
5<sup>7</sup>/<sub>8</sub> x 11<sup>4</sup>/<sub>5</sub> x 2<sup>3</sup>/<sub>4</sub>"  
150 x 300 x 70mm

Limestone, Sandstone and  
Midnight Charcoal only

**Pavers:** Sandstone  
**Wall:** Brussels Dimensional Stone® (Sandstone) with Series™ (Black Granite) accent

Color selection should be chosen from actual samples.



## CLASSIC

# Treo® Smooth

### ADVANTAGES

#### PERMEABLE

Can be installed to allow water to flow through

#### DRIVE FRIENDLY

Can handle vehicular loads

*Ask about our base stabilization system*



### GRANITE BLEND



#### LARGE RECTANGLE

$8\frac{7}{8} \times 13\frac{1}{4} \times 3\frac{1}{8}$ "  
225 x 338 x 80mm



#### SQUARE

$8\frac{7}{8} \times 8\frac{7}{8} \times 3\frac{1}{8}$ "  
225 x 225 x 80mm



#### SMALL RECTANGLE

$4\frac{1}{2} \times 8\frac{7}{8} \times 3\frac{1}{8}$ "  
112 x 225 x 80mm

3 UNIT RANDOM BUNDLE

Color selection should be chosen from actual samples.





**ENDURACOLOR™**

## Eco-Priora™

### ADVANTAGES

#### PERMEABLE

Can be installed to allow water to flow through

#### DRIVE FRIENDLY

Can handle vehicular loads. *Ask about our base stabilization system.*



**OPAL BLEND**



**STEEL GREY BLEND**



5 x 10 x 3/8"  
120 x 240 x 80mm



**ENDURACOLOR™**

## Eco-Promenade®

### ADVANTAGES

#### PERMEABLE

Can be installed to allow water to flow through

#### DRIVE FRIENDLY

Can handle vehicular loads. *Ask about our base stabilization system.*



**OPAL BLEND**



2 7/8 x 12 x 4"  
75 x 300 x 100mm

Color selection should be chosen from actual samples.



ENDURACOLOR™

# Northshore™ Coming Soon

## ADVANTAGES



Factory sealed to provide integral surface protection from stains

## SOFT TOUCH FINISH

Ultra-smooth surface texture

## DRIVE FRIENDLY

Can handle vehicular loads

*Ask about our base stabilization system*



**FOSSIL**



**GRANITE MIST**



**MIDNIGHT CHARCOAL**

6 x 12 ONLY



**LARGE RECTANGLE**

18 x 12 x 2<sup>3</sup>/<sub>4</sub>"  
457 x 300 x 70mm



**SQUARE**

12 x 12 x 2<sup>3</sup>/<sub>4</sub>"  
300 x 300 x 70mm



**SMALL RECTANGLE**

6 x 12 x 2<sup>3</sup>/<sub>4</sub>"  
150 x 300 x 70mm

3 UNIT RANDOM BUNDLE



**SMALL RECTANGLE**

6 x 12 x 2<sup>3</sup>/<sub>4</sub>"  
150 x 300 x 70mm  
Midnight Charcoal only

Granite Mist

Color selection should be chosen from actual samples.







**ENDURACOLOR™***Refined surface and  
long-lasting color*

# Beacon Hill™ Flagstone

## 60 mm

**ADVANTAGES****PEDESTRIAN FRIENDLY**

Not recommended for vehicular

**ALMOND GROVE FUSION****FOSSIL NEW****GRANITE MIST****TUSCANY****LARGE RECTANGLE**

15 x 22½ x 2¾"  
380 x 570 x 60mm

**SQUARE**

15 x 15 x 2¾"  
380 x 380 x 60mm

**SMALL RECTANGLE**

7½ x 15 x 2¾"  
190 x 380 x 60mm

**3 UNIT RANDOM BUNDLE**

Granite Mist with Copthorne® (Basalt) accent

Color selection should be chosen from actual samples.







**ENDURACOLOR™**

*Refined surface and  
long-lasting color*

# Beacon Hill™ Flagstone

## 80 mm

### ADVANTAGES

#### DRIVE FRIENDLY

Can handle vehicular loads  
*Ask about our base stabilization system*



**ALMOND GROVE FUSION**



**FOSSIL** **NEW** COMING SOON



**GRANITE MIST**



**TUSCANY**



**LARGE RECTANGLE**  
15 x 22½ x 3⅞"  
380 x 570 x 80mm



**SQUARE**  
15 x 15 x 3⅞"  
380 x 380 x 80mm



**SMALL RECTANGLE**  
7½ x 15 x 3⅞"  
190 x 380 x 80mm

3 UNIT RANDOM BUNDLE

**Pavers:** Granite Mist with Beacon Hill Smooth (Opal Blend) and Copthorne® (Basalt) border **Wall:** U-Cara® Granite Mist (Pitched) with Opal Blend (Smooth) accent and Natural Stone steps

Color selection should be chosen from actual samples.







**ENDURACOLOR™**

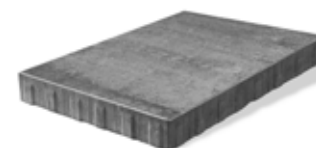
*Refined surface and  
long-lasting color*

# Beacon Hill™ Smooth 60 mm

## ADVANTAGES

### PEDESTRIAN FRIENDLY

Not recommended for vehicular



#### SLAB

22½ x 37½ x 2⅜"  
570 x 950 x 60mm  
See page 110



#### LARGE RECTANGLE

15 x 22½ x 2⅜"  
380 x 570 x 60mm



#### SQUARE

15 x 15 x 2⅜"  
380 x 380 x 60mm



#### SMALL RECTANGLE

7½ x 15 x 2⅜"  
190 x 380 x 60mm

3 UNIT RANDOM BUNDLE



#### ALMOND GROVE FUSION

Not available in Slab



#### FOSSIL **NEW** COMING SOON



#### GRANITE MIST

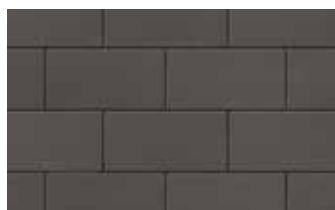


#### OPAL BLEND



#### TUSCANY

Not available in Slab



#### MIDNIGHT CHARCOAL



#### OPAL BLEND



#### SMALL RECTANGLE

7½ x 15 x 3⅜"  
190 x 380 x 60mm

Opal Blend with Mattoni (Dark Charcoal) accent

Color selection should be chosen from actual samples.







**ENDURACOLOR™***Refined surface and  
long-lasting color*

# Beacon Hill™ Smooth 80 mm

## ADVANTAGES

### DRIVE FRIENDLY

Can handle vehicular loads  
*Ask about our base stabilization system*



**LARGE RECTANGLE**  
15 x 22½ x 3⅞"  
380 x 570 x 80mm



**SQUARE**  
15 x 15 x 3⅞"  
380 x 380 x 80mm



**SMALL RECTANGLE**  
7½ x 15 x 3⅞"  
190 x 380 x 80mm

3 UNIT RANDOM BUNDLE



**ALMOND GROVE FUSION**



**FOSSIL** **NEW** *COMING SOON*



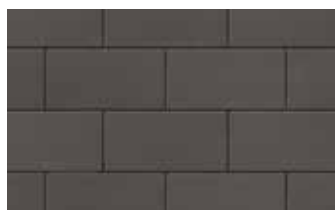
**GRANITE MIST**



**OPAL BLEND**



**TUSCANY**



**MIDNIGHT CHARCOAL**



**OPAL BLEND**



**SMALL RECTANGLE**  
7½ x 15 x 3⅞"  
190 x 380 x 80mm

Granite Mist with Copthorne® (Basalt) accent

Color selection should be chosen from actual samples.







**ENDURACOLOR™***Refined surface and  
long-lasting color*

# Mattoni™

Exclusive to **UNILOCK**

## ADVANTAGES

### EasyClean™

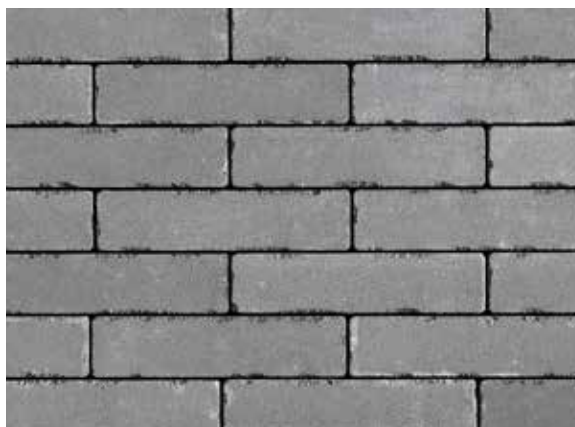
Factory sealed to provide integral surface protection from stains

### ANTIQUED FINISH

Distressed, timeworn finish

### DRIVE FRIENDLY

Can handle vehicular loads  
*Ask about our base stabilization system*

**SABLE BLEND****GRANITE BLEND****DARK CHARCOAL**

$2\frac{3}{8} \times 9\frac{2}{5} \times 2\frac{3}{4}$ "  
60 x 240 x 70mm

Sable Blend with Mattoni Dark Charcoal and Brussels Block® (Sandstone) accents

Color selection should be chosen from actual samples.





**ENDURACOLOR™**

*Refined surface and  
long-lasting color*

# IL Campo®

Exclusive to **UNILOCK®**

## ADVANTAGES

### BRUSHED FINISH

Graphically interesting etched lines

### DRIVE FRIENDLY

Can handle vehicular loads

*Ask about our base stabilization system*



**GRANITE BLEND**



**SANDSTONE**



**DARK CHARCOAL**



**LIGHT GREY**



4 x 8 x 2<sup>3</sup>/<sub>4</sub>"  
100 x 200 x 70mm  
Dark Charcoal Only



7 x 14 x 3<sup>1</sup>/<sub>8</sub>"  
180 x 360 x 80mm  
Dark Charcoal Only



8 x 16 x 2<sup>3</sup>/<sub>4</sub>"  
200 x 400 x 70mm  
All colors

Granite Blend

Color selection should be chosen from actual samples.



**ENDURACOLOR™***Refined surface and  
long-lasting color*

# Series™

## ADVANTAGES

Granite, Quartz and Marble surface materials

### DRIVE FRIENDLY

Can handle vehicular loads

*Ask about our base stabilization system*

**GLACIER****MOUNTAIN MIST****BLACK GRANITE**

8 x 8 x 2<sup>3</sup>/<sub>4</sub>"  
200 x 200 x 70mm



4 x 8 x 2<sup>3</sup>/<sub>4</sub>"  
100 x 200 x 70mm  
Black Granite Only



8 x 16 x 2<sup>3</sup>/<sub>4</sub>"  
200 x 400 x 70mm

Glacier, Mountain Mist and Black Granite (8 x 16")

Color selection should be chosen from actual samples.







**ENDURACOLOR™**

*Refined surface and long-lasting color*

# Granito™

Exclusive to **UNILOCK**

## ADVANTAGES



Factory sealed to provide integral surface protection from stains

### ARTISTA™

Boldly mottled color finish

Random Bundle not recommended for vehicular

Hex unit can handle vehicular loads



**NOTTE** RANDOM BUNDLE



**SABIA** RANDOM BUNDLE



**SCURO NEW** RANDOM BUNDLE



**NOTTE** HEX



**SABIA** HEX



**SCURO NEW** HEX



**LARGE RECTANGLE**  
14 x 21 x 2<sup>3</sup>/<sub>8</sub>"  
360 x 540 x 60mm



**SQUARE**  
14 x 14 x 2<sup>3</sup>/<sub>8</sub>"  
360 x 360 x 60mm



**SMALL RECTANGLE**  
7 x 14 x 2<sup>3</sup>/<sub>8</sub>"  
180 x 360 x 60mm



**HEX**  
8 x 8 x 2<sup>3</sup>/<sub>4</sub>"  
200 x 200 x 70mm

3 UNIT RANDOM BUNDLE

**Pavers:** Notte and Sabia Hex unit mix (Blended on site) **Wall:** U-Cara® Granite Mist (Smooth) with Universal Coping (Midnight Charcoal) coping

Color selection should be chosen from actual samples.







**ENDURACOLOR™**

*Refined surface and  
long-lasting color*

# Promenade™ Plank Paver

## ADVANTAGES

### IL CAMPO FINISH

Graphically interesting etched lines

### SERIES FINISH

Granite, Quartz and Marble surface materials

### DRIVE FRIENDLY

Can handle vehicular loads

*Ask about our base stabilization system*



**OPAL BLEND**  
IL CAMPO FINISH



**STEEL GREY BLEND**  
IL CAMPO FINISH



**OPAL BLEND**  
SERIES FINISH



**OPAL BLEND**  
IL CAMPO FINISH



**STEEL GREY BLEND**  
IL CAMPO FINISH



**DARK CHARCOAL**  
IL CAMPO FINISH



**GRANITE BLEND**  
IL CAMPO FINISH



**STEEL GREY BLEND**  
SERIES FINISH



**SANDSTONE**  
IL CAMPO FINISH



**GRANITE BLEND**  
IL CAMPO FINISH



**LIGHT GREY**  
IL CAMPO FINISH



**BLACK GRANITE**  
SERIES FINISH



**LIGHT GREY**  
IL CAMPO FINISH



**DARK CHARCOAL**  
IL CAMPO FINISH



8 x 24 x 4"  
200 x 600 x 100mm



4 x 16 x 4"  
100 x 400 x 100mm



**BLACK GRANITE**  
SERIES FINISH



4 x 12 x 4"  
100 x 300 x 100mm

**Pavers:** Steel Grey Blend, Opal Blend and Granite Blend (IL Campo Finish) with Black Granite (Series Finish) accent **Steps:** Natural Stone (Black River)

Color selection should be chosen from actual samples.







**ENDURACOLOR™***Refined surface and  
long-lasting color*

# Revela™

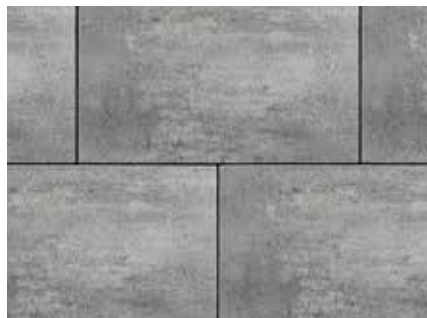
## ADVANTAGES

Enhanced surface appearance

### DRIVE FRIENDLY

Can handle vehicular loads

*Ask about our base stabilization system*



**MICA GREY**



**PEWTER**



**METALLIC GREY**



**SAVANNAH**



**LARGE RECTANGLE**

14 x 21 x 3<sup>3</sup>/<sub>8</sub>"  
360 x 540 x 80mm



**SQUARE**

14 x 14 x 3<sup>3</sup>/<sub>8</sub>"  
360 x 360 x 80mm



**SMALL RECTANGLE**

7 x 14 x 3<sup>3</sup>/<sub>8</sub>"  
180 x 360 x 80mm

**3 UNIT RANDOM BUNDLE**



**SLAB**

21 x 35 x 2<sup>3</sup>/<sub>8</sub>"  
540 x 890 x 60mm  
See page 114

**Pavers:** Mica Grey with Town Hall® (Basalt) accent **Wall:** U-Cara® Granite Mist and Opal Blend with Universal Coping (Light Grey) and Ledgestone™ Pillar Cap (Grey)

Color selection should be chosen from actual samples.





**ENDURACOLOR™**

*Refined surface and  
long-lasting color*

# Senzo

Exclusive to **UNILOCK**

## ADVANTAGES

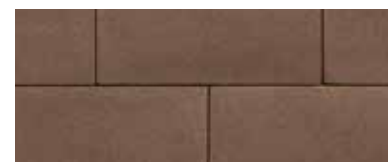


Factory sealed to provide integral surface protection from stains

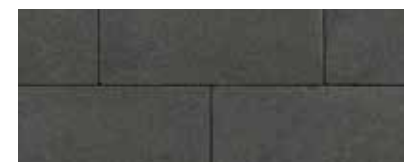
## DRIVE FRIENDLY

Can handle vehicular loads

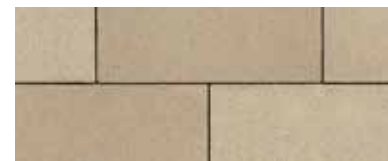
*Ask about our base stabilization system*



**MOCHA BROWN**



**MIDNIGHT CHARCOAL**



**CREMA**



8 x 16 x 2<sup>3</sup>/<sub>4</sub>"  
200 x 400 x 70mm

Mocha Brown

Color selection should be chosen from actual samples.



**ENDURACOLOR™**

*Refined surface and  
long-lasting color*

## Tribeca Cobble™

### ADVANTAGES

Granite, Quartz and Marble surface materials

### PERMEABLE

Can be installed to allow water to flow through

### DRIVE FRIENDLY

Can handle vehicular loads

*Ask about our base stabilization system*



**CRYSTALLINE BASALT**



**PEPPERED GRANITE**



### LARGE RECTANGLE

5 1/8 x 12 x 2 3/4"  
130 x 305 x 70mm



### MEDIUM RECTANGLE

5 1/8 x 9 x 2 3/4"  
130 x 230 x 70mm



### SMALL RECTANGLE

5 1/8 x 7 x 2 3/4"  
130 x 175 x 70mm

**3 UNIT RANDOM BUNDLE**

Crystalline Basalt with Peppered Granite accent

Color selection should be chosen from actual samples.







**ENDURACOLOR™***Refined surface and  
long-lasting color*

# Umbriano® 60mm

Exclusive to **UNILOCK****ADVANTAGES** **EasyClean™**

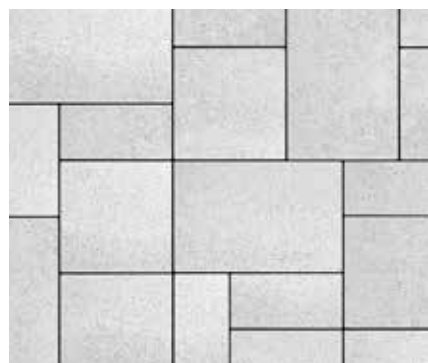
Factory sealed to provide integral surface protection from stains

**COLORFUSION™**

Subtly mottled color finish

**PEDESTRIAN FRIENDLY**

Not recommended for vehicular

**FRENCH GREY****GRENADA WHITE NEW****SUMMER WHEAT****WINTER MARVEL****LARGE RECTANGLE**  
14 x 21 x 2<sup>3</sup>/<sub>8</sub>"  
360 x 540 x 60mm**SQUARE**  
14 x 14 x 2<sup>3</sup>/<sub>8</sub>"  
360 x 360 x 60mm**SMALL RECTANGLE**  
7 x 14 x 2<sup>3</sup>/<sub>8</sub>"  
180 x 360 x 60mm**SLAB**  
21 x 35 x 2<sup>3</sup>/<sub>8</sub>"  
540 x 890 x 60mm  
See Page 113**3 UNIT RANDOM BUNDLE**

Winter Marvel

Color selection should be chosen from actual samples.







**ENDURACOLOR™***Refined surface and  
long-lasting color*

# Umbriano® 70mm

Exclusive to **UNILOCK**

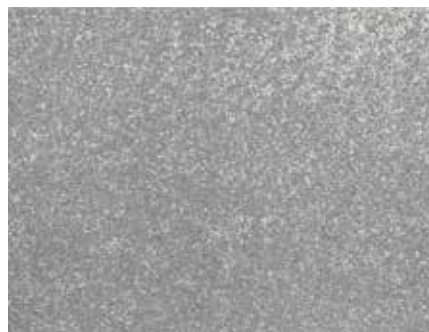
## ADVANTAGES



Factory sealed to provide integral surface protection from stains

### COLORFUSION™

Subtly mottled color finish

24" slabs not recommended for vehicular  
All other sizes can handle vehicular loads**FRENCH GREY****SUMMER WHEAT****WINTER MARVEL****MIDNIGHT SKY**

8x 24" and 8x 16" only

24 x 24 x 2<sup>3</sup>/<sub>4</sub>"  
600 x 600 x 70mm12 x 24 x 2<sup>3</sup>/<sub>4</sub>"  
300 x 600 x 70mm8 x 24 x 2<sup>3</sup>/<sub>4</sub>"  
200 x 600 x 70mm8 x 16 x 2<sup>3</sup>/<sub>4</sub>"  
200 x 400 x 70mm16 x 16 x 2<sup>3</sup>/<sub>4</sub>"  
400 x 400 x 70mm**HEX**  
8 x 8 x 2<sup>3</sup>/<sub>4</sub>"  
200 x 200 x 70mm

Summer Wheat

Color selection should be chosen from actual samples.







**ENDURACOLOR™***Refined surface and  
long-lasting color*

# Umbriano® 80mm

Exclusive to **UNILOCK**

## ADVANTAGES



Factory sealed to provide integral surface protection from stains

### COLORFUSION™

Subtly mottled color finish

### DRIVE FRIENDLY

Can handle vehicular loads  
*Ask about our base stabilization system***FRENCH GREY****SUMMER WHEAT****WINTER MARVEL****LARGE RECTANGLE**  
14 x 21 x 3 1/8"  
360 x 540 x 80mm**SQUARE**  
14 x 14 x 3 1/8"  
360 x 360 x 80mm**SMALL RECTANGLE**  
7 x 14 x 3 1/8"  
180 x 360 x 80mm**SMALL RECTANGLE**  
7 x 14 x 3 1/8"  
180 x 360 x 80mm**3 UNIT RANDOM BUNDLE****Pavers:** Summer Wheat **Wall:** U-Cara® Umbriano Finish (Summer Wheat) with Natural Stone (Indian Coast) coping

Color selection should be chosen from actual samples.







**ENDURACOLOR™***Refined surface and  
long-lasting color*

# Umbriano® 100mm

Exclusive to **UNILOCK**

## ADVANTAGES

### EasyClean™

Factory sealed to provide integral surface protection from stains

### **COLORFUSION™**

Subtly mottled color finish

### **PEDESTRIAN FRIENDLY**

Not recommended for vehicular

18 x 36" can handle vehicular loads  
*Ask about our base stabilization system***FRENCH GREY****SUMMER WHEAT****WINTER MARVEL**36 x 36 x 4"  
900 x 900 x 100mm18 x 36 x 4"  
450 x 900 x 100mm

Winter Marvel

Color selection should be chosen from actual samples.









## Richcliff®

Exclusive to **UNILOCK**

Inspired by the texture of natural cut flagstone, Richcliff offers superior durability and timeless appeal ideal for driveways, patios, walkways and commercial projects. A multitude of stone textures were cast using Reala™ Technology, to ensure that finished projects will have a completely random and natural appearance. And unlike natural stone, which can crack, split and fade, Richcliff is virtually indestructible.



Dawn Mist









Deep rich colors and unique textures

# Richcliff®

Exclusive to **UNILOCK**

## ADVANTAGES

### REALA™

Cast from natural stone

### ULTIMA™

Up to 4x stronger than poured-in-place concrete

### DRIVE FRIENDLY

Slabs not recommended for vehicular  
Random Bundle can handle vehicular loads  
*Ask about our base stabilization system*



### SLAB NEW

36 x 12 x 2<sup>3</sup>/<sub>4</sub>"  
914 x 302 x 70mm  
Dawn Mist and Smoke Shale only  
NOT RECOMMENDED FOR DRIVEWAYS



### LARGE RECTANGLE

21 x 12 x 2<sup>3</sup>/<sub>8</sub>"  
528 x 302 x 60mm  
NOT RECOMMENDED FOR DRIVEWAYS



**DAWN MIST**



**PEBBLE TAUPE**



**PEBBLE TAUPE / DAWN MIST**  
BLENDED ON SITE



**SMOKE SHALE**



**RECTANGLE**  
12 x 9 x 2<sup>3</sup>/<sub>8</sub>"  
300 x 226 x 60mm



**SQUARE**  
9 x 9 x 2<sup>3</sup>/<sub>8</sub>"  
226 x 226 x 60mm



**SMALL RECTANGLE**  
6 x 9 x 2<sup>3</sup>/<sub>8</sub>"  
150 x 226 x 60mm

**3 UNIT RANDOM BUNDLE**

Dawn Mist and Pebble Taupe with Courtstone® (Basalt) accent

Color selection should be chosen from actual samples.









## Courtstone®

Exclusive to **UNILOCK**

The polished look of Courtstone brings a luxurious, old-world elegance to driveways and walkways, with Ultima™ Concrete Technology providing up to four times the strength of conventional poured concrete. Using Reala™ Technology, the unique shapes of Courtstone were cast from real European cobblestones, but manufactured with a consistent base for efficient installation and superior interlock. It's a look that has remained popular for centuries.



Basalt









Deep rich colors and  
unique textures

# Courtstone®

Exclusive to **UNILOCK**

## ADVANTAGES

### REALA™

Cast from historic European cobble stones

### ULTIMA™

Up to 4x stronger than poured-in-place concrete

### DRIVE FRIENDLY

Can handle vehicular loads

*Ask about our base stabilization system*



## BASALT



**XL RECTANGLE**  
5 $\frac{1}{8}$  x 8 $\frac{3}{8}$  x 2 $\frac{3}{8}$ "  
130 x 215 x 60mm



**LARGE RECTANGLE**  
5 $\frac{1}{8}$  x 7 $\frac{1}{4}$  x 2 $\frac{3}{8}$ "  
130 x 185 x 60mm



**RECTANGLE**  
5 $\frac{1}{8}$  x 6 $\frac{1}{2}$  x 2 $\frac{3}{8}$ "  
130 x 165 x 60mm



**SMALL RECTANGLE**  
5 $\frac{1}{8}$  x 5 $\frac{3}{4}$  x 2 $\frac{3}{8}$ "  
130 x 145 x 60mm



**SQUARE**  
5 $\frac{1}{8}$  x 5 $\frac{1}{8}$  x 2 $\frac{3}{8}$ "  
130 x 130 x 60mm

5 UNIT RANDOM BUNDLE

Basalt with Umbriano® (Summer Wheat) inlay

Color selection should be chosen from actual samples.









## Town Hall®

Exclusive to **UNILOCK**

The substantial proportions and unique color blending of Town Hall are modeled after historic North American clay street pavers. The timeless look makes it an excellent choice for driveways, patios, walkways and more, in either traditional or permeable applications. The rich colors and classic shape also make it popular for borders, banding and other accents. To ensure projects have a random appearance, Town Hall textures were cast from a multitude of different surfaces using Reala™ Technology. The result is vintage, streetscape charm that stands the test of time.



3 Color Blend (Burgundy Red, Burnt Clay and Old Oak)









Deep rich colors and  
unique textures

# Town Hall®

Exclusive to **UNILOCK**

## ADVANTAGES

### REALA™

Cast from historic brick

### ULTIMA™

Up to 4x stronger than poured-in-place concrete

### PERMEABLE

Can be installed to allow water to flow through

### DRIVE FRIENDLY

Can handle vehicular loads  
*Ask about our base stabilization system*



**BURGUNDY RED**



**BURNT CLAY**



**OLD OAK**



**3 COLOR BLEND** BLENDED ON SITE



**BASALT**



**STANDARD**  
4 x 9<sup>3</sup>/<sub>4</sub> x 2<sup>3</sup>/<sub>4</sub>"  
100 x 250 x 70mm

Basalt

Color selection should be chosen from actual samples.









## Copthorne®

Exclusive to **UNILOCK**

Inspired by the rich color and timeworn beauty of European street pavers, Copthorne offers more delicate dimensions than Town Hall®. These proportions make it possible to design curved walkways and borders using Copthorne without the need for cutting. Cast using Reala™ Technology for an authentic surface appearance, and Ultima™ Concrete Technology to deliver up to four times the strength of conventional poured concrete, Copthorne offers timeless beauty.



3 Color Blend (Burgundy Red, Burnt Clay and Old Oak)









Deep rich colors and  
unique textures

# Copthorne®

Exclusive to **UNILOCK**

## ADVANTAGES

### REALA™

Cast from historic brick

### ULTIMA™

Up to 4x stronger than poured-in-place concrete

### DRIVE FRIENDLY

Can handle vehicular loads

*Ask about our base stabilization system*



**BURGUNDY RED**



**BURNT CLAY**



**BASALT**



**OLD OAK**



**3 COLOR BLEND**  
BLENDED ON SITE



### STANDARD

$2\frac{1}{2} \times 7\frac{7}{8} \times 2\frac{3}{8}$ "  
65 x 200 x 60mm

3 Color Blend with Richcliff® (Dawn Mist)

Color selection should be chosen from actual samples.





## CLASSIC

# Metro Slab™

---

### ADVANTAGES

#### ClassicCoat

Factory sealed to protect surface texture and color

#### PEDESTRIAN FRIENDLY

Not recommended for vehicular



LIMESTONE



MIDNIGHT CHARCOAL



SANDSTONE



15 x 30 x 2<sup>3</sup>/<sub>4</sub>"  
380 x 760 x 60mm

Limestone and Sandstone Mix with Midnight Charcoal accent

Color selection should be chosen from actual samples.



**ENDURACOLOR™**

*Refined surface and  
long-lasting color*

# Promenade™ Plank

## ADVANTAGES

### IL CAMPO FINISH

Graphically interesting etched lines

### SERIES FINISH

Granite, Quartz and Marble  
surface materials

### DRIVE FRIENDLY

Can handle vehicular loads  
*Ask about our base stabilization system*



**OPAL BLEND** SMOOTH FINISH



**STEEL GREY BLEND** SMOOTH FINISH



**GRANITE BLEND** IL CAMPO® FINISH



**DARK CHARCOAL** IL CAMPO® FINISH



**LIGHT GREY** IL CAMPO® FINISH



**BLACK GRANITE** SERIES™ FINISH



8 x 24 x 4"  
200 x 600 x 100mm

Black Granite

Color selection should be chosen from actual samples.





**ENDURACOLOR™**

*Refined surface and  
long-lasting color*

# Soreno™ Slab

## Coming Soon

Exclusive to **JN LOCK**

### ADVANTAGES

Enhanced surface appearance

 **EasyClean™**

Factory sealed to provide integral  
surface protection from stains

### PEDESTRIAN FRIENDLY

Not recommended for vehicular



**LIGHT GRANITE**



**TOSCANA BEIGE**



16 x 32 x 2"  
400 x 800 x 50mm

Light Granite

Color selection should be chosen from actual samples.



**ENDURACOLOR™***Refined surface and  
long-lasting color*

# Arcana™ Slab

Exclusive to **UNILOCK**

## ADVANTAGES

Enhanced surface appearance

 **EasyClean™**

Factory sealed to provide integral surface protection from stains

## PEDESTRIAN FRIENDLY

Not recommended for vehicular

**MODENA****CORVARA****VIVANTO**

23<sup>7</sup>/<sub>8</sub> x 23<sup>7</sup>/<sub>8</sub> x 2"  
610 x 610 x 50mm  
SPECIAL ORDER

Modena



17<sup>7</sup>/<sub>8</sub> x 23<sup>7</sup>/<sub>8</sub> x 2"  
450 x 600 x 50mm

Color selection should be chosen from actual samples.





**ENDURACOLOR™**

*Refined surface and  
long-lasting color*

# Beacon Hill™ Smooth Slab

## ADVANTAGES

### PEDESTRIAN FRIENDLY

Not recommended for vehicular



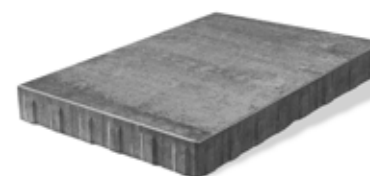
**GRANITE MIST**



**FOSSIL** **NEW** *COMING SOON*



**OPAL BLEND**



22<sup>7</sup>/<sub>16</sub> x 37<sup>3</sup>/<sub>8</sub> x 2<sup>3</sup>/<sub>8</sub>"  
570 x 950 x 60mm

Granite Mist

Color selection should be chosen from actual samples.



**ENDURACOLOR™***Refined surface and  
long-lasting color*

# Richcliff® Slab

## New

Exclusive to **JNIBLOCK®**

### ADVANTAGES

**REALA™**

Cast from natural stone

**ULTIMA™**Up to 4x stronger than  
poured-in-place concrete**PEDESTRIAN FRIENDLY**

Not recommended for vehicular

**DAWN MIST****SMOKE SHALE****SLAB NEW**

36 x 12 x 2¾"

914 x 302 x 70mm

Smoke Shale

Color selection should be chosen from actual samples.







**ENDURACOLOR™**

*Refined surface and long-lasting color*

# Umbriano® Slab

Exclusive to **UNILOCK**

**ADVANTAGES**



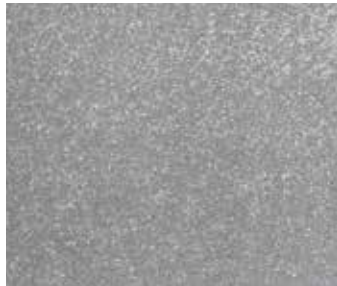
Factory sealed to provide integral surface protection from stains

**COLORFUSION™**

Subtly mottled color finish

**PEDESTRIAN FRIENDLY**

Not recommended for vehicular



**FRENCH GREY**



**MIDNIGHT SKY**  
8 x 24" only



**SUMMER WHEAT**



**WINTER MARVEL**



**GRENADA WHITE NEW**  
21 x 35" Only



21 x 35 x 2<sup>3</sup>/<sub>8</sub>"  
540 x 890 x 60mm



8 x 24 x 2<sup>3</sup>/<sub>4</sub>"  
200 x 600 x 70mm



12 x 24 x 2<sup>3</sup>/<sub>4</sub>"  
300 x 600 x 70mm



24 x 24 x 2<sup>3</sup>/<sub>4</sub>"  
600 x 600 x 70mm



18 x 36 x 4"  
450 x 900 x 100mm



36 x 36 x 4"  
900 x 900 x 100mm

French Grey

Color selection should be chosen from actual samples.



**ENDURACOLOR™**

*Refined surface and  
long-lasting color*

# Revela™ Slab

---

## ADVANTAGES

Enhanced surface appearance

## PEDESTRIAN FRIENDLY

Not recommended for vehicular



**MICA GREY**



**PEWTER**



**METALLIC GREY**



**SAVANNAH**



## SLAB

21 x 35 x 2<sup>3</sup>/<sub>8</sub>"

540 x 890 x 60mm

Mica Grey

Color selection should be chosen from actual samples.



# Porcelain Tile Slabs

*Suitable for wood deck  
and concrete overlays.*

## PEDESTRIAN FRIENDLY

Not recommended for vehicular



**GOTHAM GREY** DELCONCA USA



**TRAVSTONE BEIGE** DELCONCA USA



**TRAVSTONE NOCE** DELCONCA USA



**GRAUSTEIN** CAESAR



24 x 24 x 3/4"  
600 x 600 x 20mm



**UNILOCK COSMIC GREY**



**UNILOCK DOVE GREY TRAVERTINE**



**LASCALA GREY** DELCONCA USA



16 x 32 x 3/4"  
400 x 800 x 20mm

Please contact your contractor or a local Unilock Authorized Dealer for more information and availability.  
**LOOKING FOR MORE INFORMATION?** Visit [Unilock.com](http://Unilock.com) to download a Porcelain Tile Brochure.





# Natural Stone

## SANDSTONE & LIMESTONE

---

*Suitable for pool decks, wood decks, patios, entrances and concrete overlays.*

### **PEDESTRIAN FRIENDLY**

Not recommended for vehicular



**GREYFIELD** SANDSTONE



**INDIAN COAST** SANDSTONE



**IVORY SAND NEW** SANDSTONE



**STONE CLIFF GREY** SANDSTONE



**BLACK RIVER** LIMESTONE



12 x 24 x 7/8"  
300 x 600 x 22mm



24 x 24 x 7/8"  
600 x 600 x 22mm



24 x 36 x 7/8"  
600 x 900 x 22mm

Please contact your contractor or a local Unilock Authorized Dealer for more information and availability.

Stone Cliff Grey



# Natural Stone

## GRANITE

*Suitable for pool decks, wood decks, patios, entrances and concrete overlays.*

### PEDESTRIAN FRIENDLY

Not recommended for vehicular



**BLACK OYSTER**



**CASTLE GREY**



**GALAXY FROST**



12 x 24 x 1 or 2"  
300 x 600 x 25mm or 50mm



12 x 36 x 2"  
300 x 900 x 50mm



24 x 24 x 1 or 2"  
600 x 600 x 25mm or 50mm

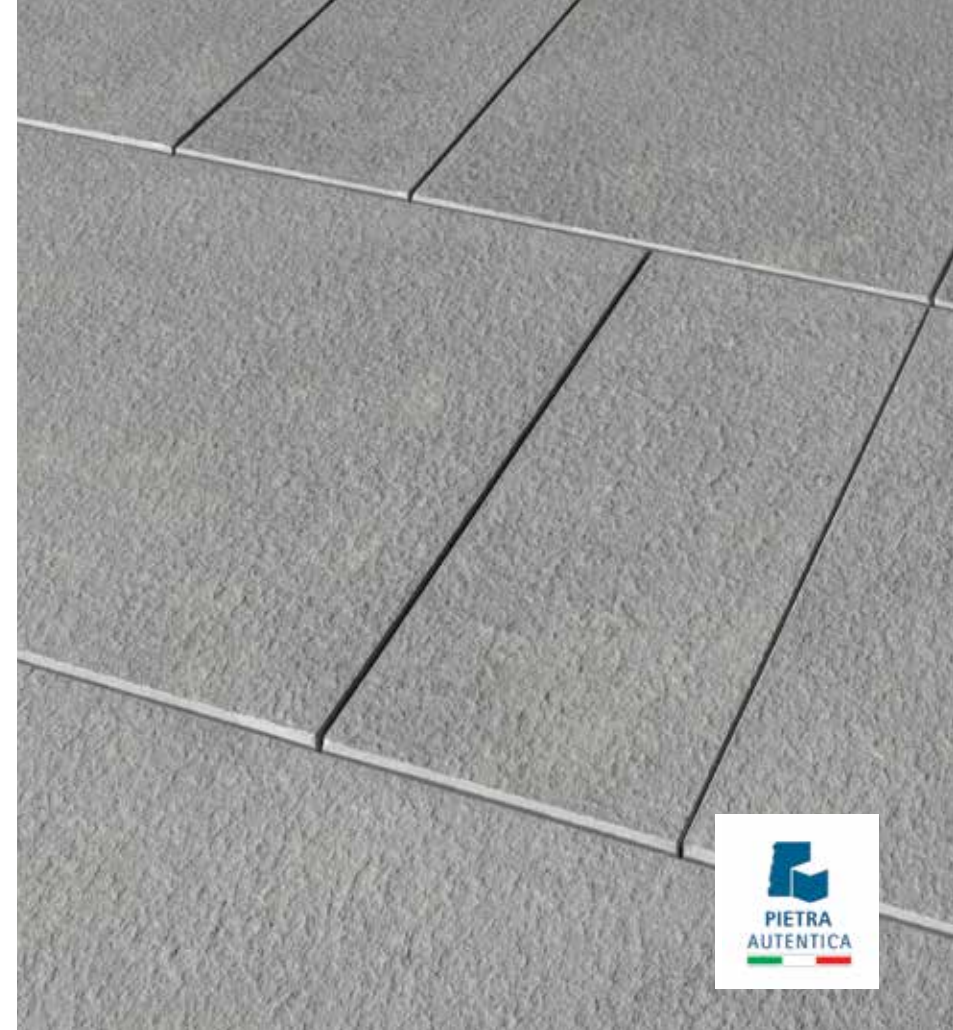
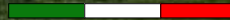
Please contact your contractor or a local Unilock Authorized Dealer for more information and availability.

Castle Grey





*From the  
rolling hills  
of Tuscany*



Pavers: Tuscan Bucine Bluestone  
with Series™ (Black Granite) accents  
Wall: U-Cara™ (Granite Mist Pitched) with  
Series (Black Granite) accents

Please contact your contractor or a  
local Unilock Authorized Dealer for  
more information and availability.

**LOOKING FOR MORE  
INFORMATION?**

Visit [Unilock.com](http://Unilock.com) to download  
a Natural Stone Brochure.





# Natural Stone

## TUSCAN BUCINE BLUESTONE

Exclusive to **UNILOCK**

**BUCINE  
BLUESTONE®**  
from Tuscany



*Suitable for pool decks, wood decks,  
patios, entrances and concrete overlays.*



**NOW AVAILABLE**  
**U-CARA® FASCIA PANEL**

See page 123 for more information.

### PEDESTRIAN FRIENDLY

Not recommended for vehicular



### FLAMED SANDSTONE

**Bring a little bit of Florence and Tuscany to your project with Bucine Bluestone, exclusively from Unilock.**

The material of choice for leading artists in the history of Italian art and the Renaissance, this stone has been widely used for centuries.

Our Bucine Bluestone is a sandstone, sourced directly from Italy. A classic material of beautiful, uniform grey color, it is highly durable for outdoor use, extremely versatile, easy to maintain and combines well with many other colors and materials.



12 x 24 x 1½"  
300 x 600 x 38mm



24 x 24 x 1½"  
600 x 600 x 38mm



24 x 36 x 1½"  
600 x 900 x 38mm



**STEP**  
24 x 48 x 6"  
600 x 1200 x 150mm



**COPING**  
14 x 48 x 2"  
356 x 1200 x 50mm



**PILLAR CAP**  
24 x 24 x 2"  
600 x 600 x 50mm

Color selection should be chosen from actual samples.









# Retaining Walls & Vertical Features

Unlimited creative possibilities exist for retaining soil or building vertical features like grill islands and firepits. Now the durability of EnduraColor™ is available, thanks to our U-Cara® Multi-Face Wall System.

**Pavers:** Beacon Hill™ Flagstone (Almond Grove Fusion) with Town Hall® (Basalt) accent  
**Wall:** U-Cara® Pitched and Smooth (Almond Grove Fusion)







# ENDURACOLOR™

## U-Cara®

### Multi-Face Wall System



2019

U-Cara received the "red dot" award for high design quality and innovation.

Exclusive to **UNILOCK**

This patented wall system, exclusive to Unilock, represents a revolution in wall design. With U-Cara it's now possible to design walls, pillars, planters, fire features, grill islands and more, with the refined surface and long-lasting color of exclusive Unilock EnduraColor finishes.

#### UMBRIANO® FINISH



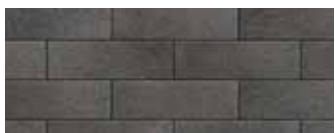
**FRENCH GREY**



**SUMMER WHEAT**



**WINTER MARVEL**



**MIDNIGHT SKY**

#### PITCHED FINISH



**ALMOND GROVE FUSION**



**GRANITE MIST**

#### SMOOTH FINISH



**ALMOND GROVE FUSION**



**FOSSIL NEW**



**GRANITE MIST**



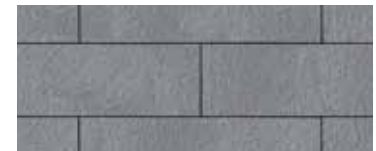
**OPAL BLEND**

#### SERIES™ FINISH



**BLACK GRANITE** 3" PANEL ONLY

#### TUSCAN BUCINE BLUESTONE



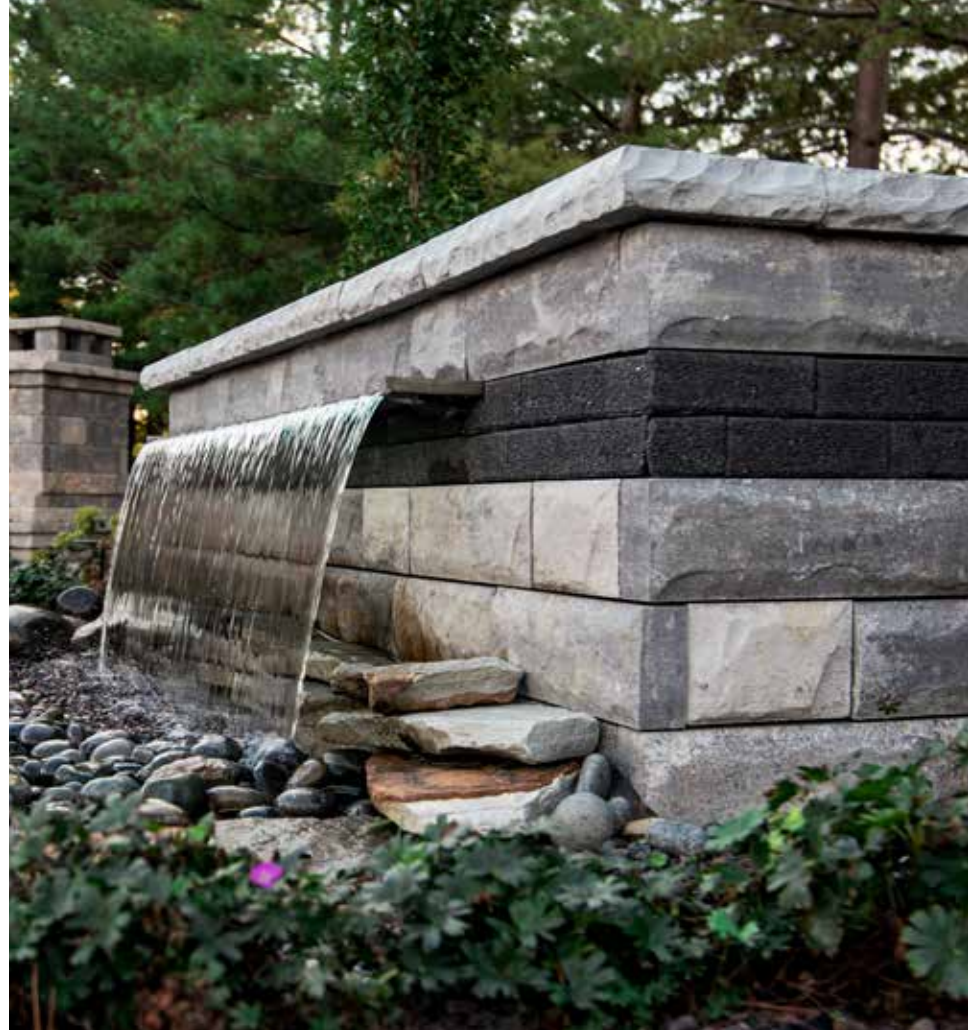
**FLAMED SANDSTONE**

Granite Mist (Pitched) and Opal Blend (Smooth) accent and Natural Stone step treads and coping  
Color selection should be chosen from actual samples.



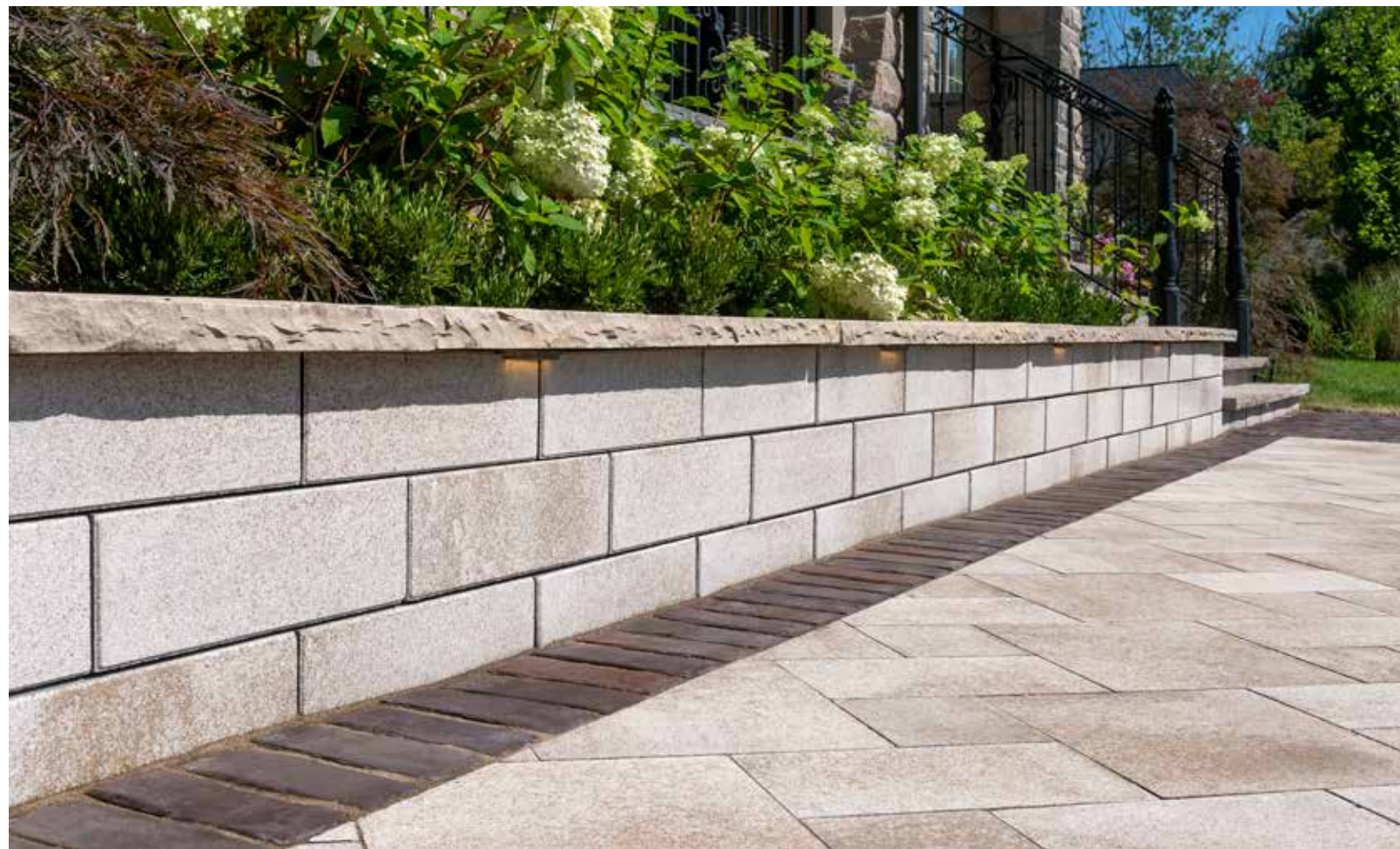


**LEFT**  
 U-Cara (Fossil Pitched) with  
 U-Cara (Fossil Smooth) backsplash  
**Pavers:** Beacon Hill™ Flagstone  
 (Almond Grove Fusion) with  
 Copthorne® (Basalt) accent



**RIGHT**  
 U-Cara (Granite Mist Pitched) with  
 U-Cara Series™ (Black Granite) accent  
 and LedgeStone™ (Grey) coping

**BOTTOM**  
 U-Cara (Summer Wheat  
 Umbriano Finish) with Natural Stone  
 (Indian Coast) coping  
**Pavers:** Umbriano (Summer Wheat)  
 with Town Hall® (3 Color Blend)





**ENDURACOLOR™**

*Refined surface and long-lasting color*

# U-Cara®

## Multi-Face Wall System

U-Cara Fascia Panels can be placed anywhere along the patented SureTrack™ Backer Block, allowing for pattern, color and texture combinations that are impossible to achieve with other systems. The design possibilities are endless for single or double sided vertical landscape features and retaining walls.

Exclusive to **UNILOCK**

### 1 CHOOSE YOUR BASE UNIT



**U-GRIP™ BASE PAD**  
14 x 19 x 2"  
355 x 482 x 55mm

### ADVANTAGES

**UMBRIANO® FINISH**  
**COLORFUSION™**  
Subtly mottled color finish

**SERIES™ FINISH**  
Granite, Quartz and  
Marble surface materials

### 2 CHOOSE A BACKER SIZE



**SURETRACK STANDARD BACKER**  
6 x 8 x 6"  
150 x 200 x 150mm



**SURETRACK LARGE/CORNER BACKER**  
6 x 7 x 12"  
150 x 175 x 300mm



**SURE TRACK CORNER INSERT**  
L = 2"  
50mm

### 3 CHOOSE PANEL SIZES



**6" STANDARD FASCIA PANEL**  
6 x 18½ x 2⅜"  
150 x 466 x 60mm



**STANDARD FASCIA HALF PANEL**  
6 x 9¼ x 2⅜"  
150 x 233 x 60mm



**CLOSED-END FASCIA PANEL**  
6 x 21 x 2⅜"  
150 x 540 x 60mm



**3" FASCIA PANEL**  
3 x 9¼ x 2⅜"  
75 x 233 x 60mm  
SERIES FINISH ONLY

2 UNIT CORNER BUNDLE

### 4 CHOOSE PANEL STYLES



PITCHED



SMOOTH



UMBRIANO



SERIES



FLAMED

### 5 CHOOSE COPING



UNIVERSAL COPING



UMBRIANO COPING

US Pat. 9,453,341 (International Patents Pending)

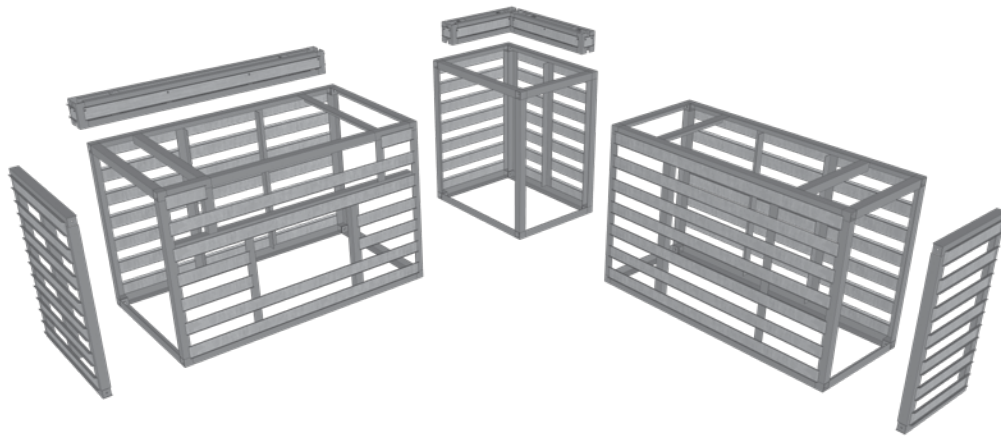
See page 157 for more coping pairings.



# Modular System

## U-Cara Multi-Face Wall

The U-Cara® Modular System offers a variety of aluminum frames that can be mixed and matched to construct vertical features like grill islands and pillars.



**With the U-Cara Modular System you can build Grill Islands, Bars, Back splashes, Fire Tables and Pillars.**



Speak to your contractor to select a design and a U-Cara fascia panel finish to suit your project.



# Wall Mount

## U-Cara Multi-Face Wall

The U-Cara Wall Mount System allows you to put the finishing touches on your project by cladding existing structures like unsightly exposed foundation areas or concrete steps with U-Cara fascia panels.

**Create matching vertical features with the U-Cara Modular System to complete your cohesive design.**







**LEFT**

Granite Blend with Midnight Charcoal accent and Natural Stone (Black River) coping



**RIGHT**

Granite Blend with Series™ (Black Granite) accent and Ledgestone™ (Grey) coping and pillar cap

**BOTTOM**

Sandstone with Mattoni™ (Dark Charcoal) accent and Ledgestone™ (Buff) coping and trim





**CLASSIC**

# Lineo™ Dimensional Stone

**COPING OPTIONS**

We recommend using Ledgestone™, Natural Stone, Universal Coping or Umbriano® coping.



**SANDSTONE**



**GRANITE BLEND**



**MIDNIGHT CHARCOAL**



4 x 24 x 8"  
100 x 600 x 200mm



4 x 20 x 8"  
100 x 500 x 200mm



4 x 16 x 8"  
100 x 400 x 200mm



4 x 12 x 8"  
100 x 300 x 200mm

4 UNIT RANDOM BUNDLE



**PILLAR UNIT / CORNER UNIT**  
4 x 16 x 8"  
100 x 400 x 200mm



**LEDGESTONE™ PILLAR CAP**  
29 x 29 x 4"  
740 x 740 x 100mm  
While quantities last



**U-GRIP™ BASE PAD**  
14 x 19 x 2"  
355 x 482 x 55mm

Color selection should be chosen from actual samples.





## CLASSIC

# Brussels Dimensional Stone®

### COPING OPTIONS

We recommend using Ledgestone™, Natural Stone, Universal Coping, Brussels Fullnose™ or Umbriano® coping.



**LIMESTONE**



**MAHOGANY**



**SANDSTONE**



**COFFEE CREEK** **NEW**



**MIDNIGHT CHARCOAL**



**STANDARD**

12 x 4 x 8"  
300 x 100 x 200mm



**U-GRIP™ BASE PAD**

14 x 19 x 2"  
355 x 482 x 55mm

### SUNSET FIREPIT KITS

**Round**



**Square**



Available Colors: Desert Sand, Mahogany and Sandstone. See page 147 for details.

Sandstone Firepit and TV unit with Brussels Fullnose™ (Sandstone) coping  
Pavers: Beacon Hill™ Flagstone (Almond Grove Fusion) and Copthorne® (3 Color Blend) accents

Color selection should be chosen from actual samples.



**CLASSIC**

**Pisa2™**

**COPING OPTIONS**

We recommend using Natural Stone, Universal Coping or Pisa Coping.



**GRANITE**



**MAHOGANY**



**NATURAL**



**SIERRA**



**STANDARD**  
8 x 12 x 6"  
200 x 300 x 150mm



**TAPERED**  
8 x 12 x 6"  
200 x 300 x 150mm



**CORNER**  
8 x 12 x 6"  
200 x 300 x 150mm



**24" COPING**  
12 x 24 x 3"  
300 x 600 x 75mm



**U-GRIP™ BASE PAD**  
14 x 19 x 2"  
355 x 482 x 55mm

Natural

Color selection should be chosen from actual samples.





**TOP**

Granite Blend with Universal Coping (Light Grey) and Natural Stone (Black River) pillar cap

**BOTTOM**

Granite Blend with Universal Coping (Midnight Charcoal)





## CLASSIC

# Pisa Smooth™

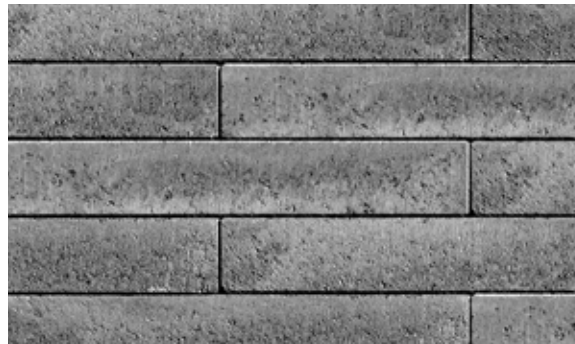
---

### COPING OPTIONS

We recommend using Ledgestone™, Natural Stone, Universal Coping or Pisa Coping.



**CLIFFSIDE GREY**



**GRANITE BLEND**



**IRISH COAST**



#### STANDARD

10<sup>3</sup>/<sub>4</sub> x 21<sup>1</sup>/<sub>2</sub> x 3<sup>3</sup>/<sub>4</sub>"  
275 x 550 x 85mm



#### COPING

13<sup>3</sup>/<sub>4</sub> x 21<sup>1</sup>/<sub>2</sub> x 3<sup>3</sup>/<sub>4</sub>"  
350 x 550 x 85mm



#### CORNER

10<sup>3</sup>/<sub>4</sub> x 21<sup>1</sup>/<sub>2</sub> x 3<sup>3</sup>/<sub>4</sub>"  
275 x 550 x 85mm



#### U-GRIP™ BASE PAD

14 x 19 x 2"  
355 x 482 x 55mm

Color selection should be chosen from actual samples.





**CLASSIC**

**SienaStone™**

---



**NATURAL**



**STANDARD 925**  
37½ x 47¼ x 7¼"  
925 x 1200 x 185mm



**STANDARD 500**  
20 x 47¼ x 7¼"  
1500 x 200 x 185mm



**STANDARD 333**  
13 x 47¼ x 7¼"  
333 x 1200 x 185mm



**CORNER 45° (left & right)**  
20 x 43⅓ x 7¼"  
500 x 1100 x 185mm



**CORNER 90° (left & right)**  
20 x 43⅓ x 7¼"  
500 x 1100 x 185mm



**COPING**  
20 x 47¼ x 7¼"  
500 x 1200 x 185mm

See page 138 for SienaStone Steps.

Color selection should be chosen from actual samples.



## CLASSIC

# SienaStone™ Smooth



### GRANITE BLEND



#### STANDARD 375

14 $\frac{3}{4}$  x 47 $\frac{1}{4}$  x 7"  
375 x 1200 x 180mm



#### CORNER UNIT 375

14 $\frac{3}{4}$  x 38 $\frac{3}{8}$  x 7"  
375 x 1200 x 180mm



#### COPING 383

15 x 47 $\frac{1}{4}$  x 7"  
383 x 1200 x 180mm

**NOTE:** *Coping Unit can also act as a closed end unit with the unique patented locking mechanism.*

Granite Blend

Color selection should be chosen from actual samples.









# Steps, Treads, Coping & Caps

From classic, fullnose shapes to pitched-face edges, our steps, treads and coping offer a wide variety of choices for the finishing touch on your project.

**Wall:** U-Cara® Granite Mist (Pitched) with Universal Coping (Light Grey)  
**Pavers:** Beacon Hill™ Flagstone (Granite Mist) with Town Hall® (Basalt) accent



# Unilock Steps

---

## Ledgestone™



**BUFF**



**GREY**



**48" STEP**  
24 x 48 x 6"  
610 x 1220 x 150mm

**REALA™**  
Cast from natural stone  
**STONEMARK™**

## SienaStone™



**GRANITE**



**MAHOGANY**



**NATURAL**



**48" STEP**  
20 x 47¼ x 7¼"  
500 x 1200 x 185mm

## SienaStone™ Smooth



**GRANITE BLEND**



**LIGHT GREY**



**TAN**



**MIDNIGHT CHARCOAL**



**48" STEP**  
20 x 47¼ x 7¼"  
500 x 1200 x 180mm



**72" STEP**  
20 x 70¾ x 7¼"  
500 x 1800 x 180mm

**NOTE:** 2 Edge details available on the same unit (Chamfer and Rounded) Contact a Unilock representative for more information.



## Natural Stone

### SANDSTONE & LIMESTONE

AVAILABLE IN BOTH ROCK FACE AND SMOOTH



**INDIAN COAST** SANDSTONE



**IVORY SAND NEW** SANDSTONE



**GREYFIELD** SANDSTONE



**48" LENGTH**  
16 x 47 $\frac{1}{4}$  x 6"  
400 x 1200 x 150mm



**72" LENGTH**  
16 x 70 $\frac{3}{4}$  x 6"  
400 x 1800 x 150mm

AVAILABLE IN ROCK FACE ONLY



**STONE CLIFF GREY** SANDSTONE

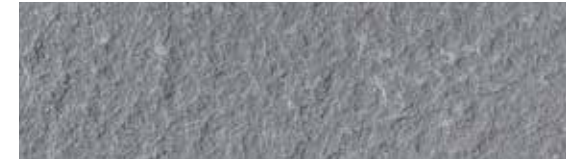


**BLACK RIVER** LIMESTONE



## Natural Stone

### FLAMED SANDSTONE



**TUSCAN BUCINE BLUESTONE**

**BUCINE  
BLUESTONE®**  
from Tuscany



**48" STEP**  
24 x 48 x 6"  
600 x 1200 x 150mm

Color selection should be chosen from actual samples.



# Unilock Coping & Caps

## Ledgestone™

SPECIAL ORDER PRODUCT



BUFF



GREY



**COPING UNIT**  
12 x 24 x 2<sup>3</sup>/<sub>4</sub>"  
300 x 610 x 70mm



**CLOSED END COPING**  
12 x 24 x 2<sup>3</sup>/<sub>4</sub>"  
300 x 610 x 70mm



**FULLNOSE COPING**  
12 x 24 x 2<sup>3</sup>/<sub>8</sub>"  
300 x 610 x 60mm

**REALA™**  
Cast from natural stone

**STONEMARK™**

## Universal Coping



TAN



LIGHT GREY



MIDNIGHT CHARCOAL



**ENDURACOLOR™**  
14 x 19 x 2<sup>3</sup>/<sub>4</sub>"  
360 x 480 x 70mm

## Pisa2®



GRANITE



MAHOGANY



NATURAL



SIERRA



**24" COPING**  
12 x 24 x 3"  
300 x 600 x 75mm

Exclusive to **UNILOCK**

## Umbriano® Coping



FRENCH GREY



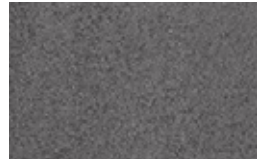
GRENADA WHITE **NEW**



SUMMER WHEAT



WINTER MARVEL



MIDNIGHT SKY



**CHAMFERED**  
14 x 24 x 2<sup>3</sup>/<sub>8</sub>"  
360 x 600 x 60mm



**BULLNOSE**  
14 x 24 x 2<sup>3</sup>/<sub>8</sub>"  
360 x 600 x 60mm

**ENDURACOLOR™**



## Natural Stone

SANDSTONE & LIMESTONE

AVAILABLE IN BOTH ROCK FACE AND SMOOTH



**INDIAN COAST** SANDSTONE



**IVORY SAND** **NEW** SANDSTONE



**GREYFIELD** SANDSTONE



**48" LENGTH**  
14 x 48 x 2"  
360 x 1200 x 50mm



**72" LENGTH**  
14 x 72 x 2"  
1830 x 360 x 50mm

AVAILABLE IN ROCK FACE ONLY



**STONE CLIFF GREY** SANDSTONE

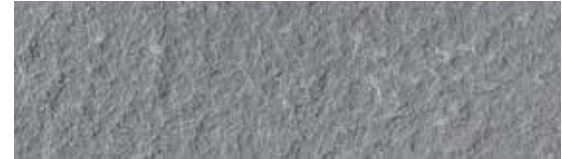


**BLACK RIVER** LIMESTONE



## Natural Stone

FLAMED SANDSTONE



**TUSCAN BUCINE BLUESTONE**

**BUCINE  
BLUESTONE®**  
from Tuscany



**COPING**  
14 x 48 x 2"  
356 x 1200 x 50mm



**PILLAR CAP**  
24 x 24 x 2"  
600 x 600 x 50mm

Color selection should be chosen from actual samples.









# Making Your Project Unique

Using Unilock finishing touches can make all the difference in the world to your finished product. With special attention to the details, your landscape dreams can soar above your expectations!

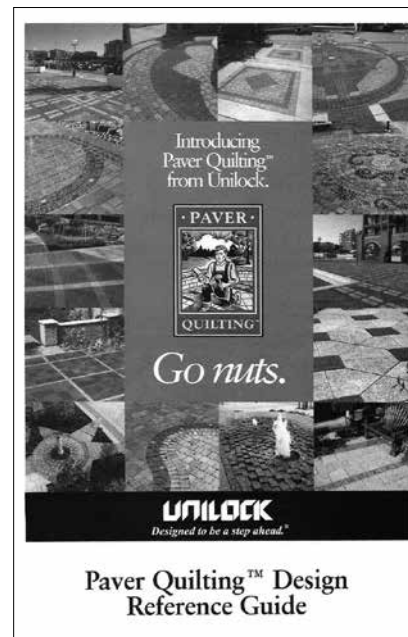
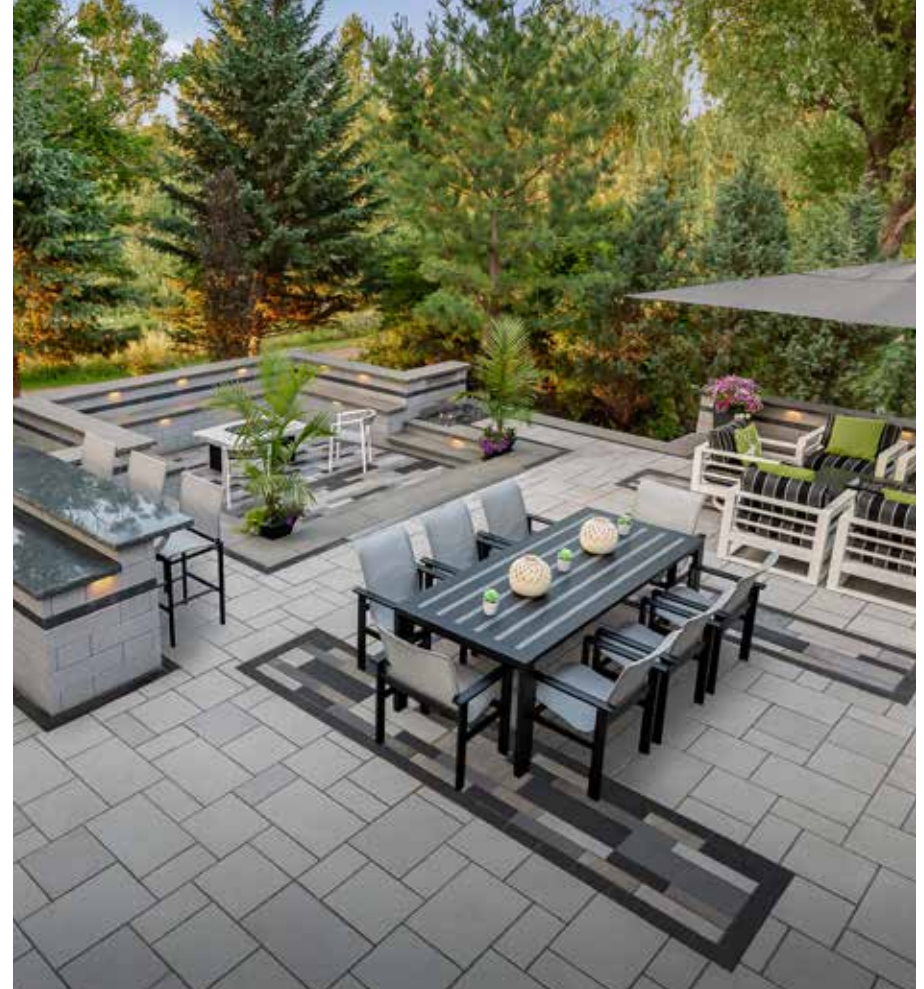
Beacon Hill™ Flagstone (Almond Grove Fusion) with Copthorne® (Basalt) accents



# Borders & Accents

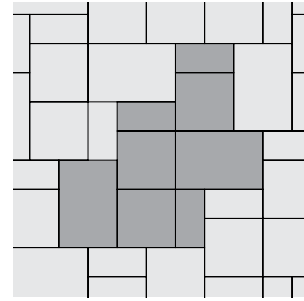
---

The creative use of Unilock borders and banding adds a touch of elegance to your driveway, walkway, patio or vertical features. Use them to enhance your design selections and create distinctive designs.



Unilock was the first to introduce the concept of paver design accents more than **20 years ago.**





**LAYING PATTERNS**

One of the factors that makes your landscape project unique is the laying pattern you choose. Your contractor can recommend the best laying patterns for the product you've selected.

*Visit [Unilock.com](http://Unilock.com) for laying patterns.*



PAVER Richcliff® (Smoke Shale)  
ACCENT Courtstone® (Basalt)



PAVER Mattoni™ (Granite Blend)  
ACCENT Mattoni (Dark Charcoal)



PAVER Revela™ Slab (Metallic Grey)  
ACCENT Cophthorne (Basalt)



PAVER Umbriano® (Summer Wheat)  
ACCENT Cophthorne® (3 Color Blend)



PAVER Courtstone (Basalt)  
ACCENT Cophthorne® (Burgundy Red)



PAVER Umbriano Hex (Winter Marvel, Midnight Sky & French Grey)  
ACCENT Mattoni (Dark Charcoal) & Umbriano Winter Marvel



WALL U-Cara® (Fossil Smooth)  
ACCENT U-Cara (Umbriano Summer Wheat)



WALL U-Cara (Granite Mist Pitched)  
ACCENT U-Cara (Series Black Granite 3" panel)



# Firepits & Fire Features

---



Imagine the pure joy of sitting around an outdoor firepit with your friends and family! Envision getting cozy on a cool night and enjoying the mesmerizing flames from your backyard Unilock firepit or fireplace. It's a dreamer's dream come true!





## HEAT DAMAGE PREVENTION

To ensure a long lasting fire feature, direct exposure to extreme heat from an open flame should be avoided. Always construct fire features with a protective heat barrier such as a metal insert, refractory blocks or approved firebrick to prevent potential heat damage.

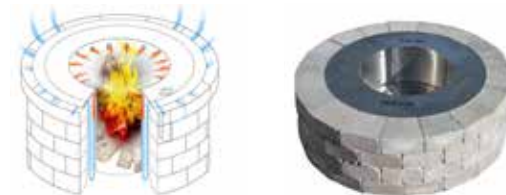
## Sunset Firepit Kit Square shape also available.



## UNILOCK REDUCED SMOKE INSERT

**ZENTRO TECHNOLOGY FIREPIT INSERT  
AVAILABLE FOR ALL FIREPIT KITS.**

There's nothing like relaxing around a roaring fire to bring family and friends closer together. But with ordinary firepits, smoke always blows in someone's face - usually yours. With Unilock Reduced Smoke Inserts, stinging eyes are a thing of the past. Zentro's patent-pending technology reburns smoke before it gets anywhere near your eyes. Say hello to good times and goodbye to smoke.



Each firepit kit comes with a firepit grill that fits securely into the firepit.

**NOTE:** Large fires and extreme heat are detrimental to concrete.



# Outdoor Kitchens

---

An outdoor kitchen has a certain element of extravagance. It's an entire, defined space dedicated to the preparation of meals among family and friends – set outside, no less.



From a practical side, an outdoor kitchen extends your home's living and entertaining space and allows you to make the most of your backyard.





*U-Cara Wall*



*Lineo Dimensional Stone*



*Lineo Dimensional Stone*

## Design Considerations

If you're considering adding an outdoor kitchen to your outside escape, you likely have questions. You need to think about how you'll use the space, the outdoor appliances you need, the best location for a kitchen in your yard, and how it will weather the elements over time.



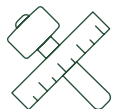
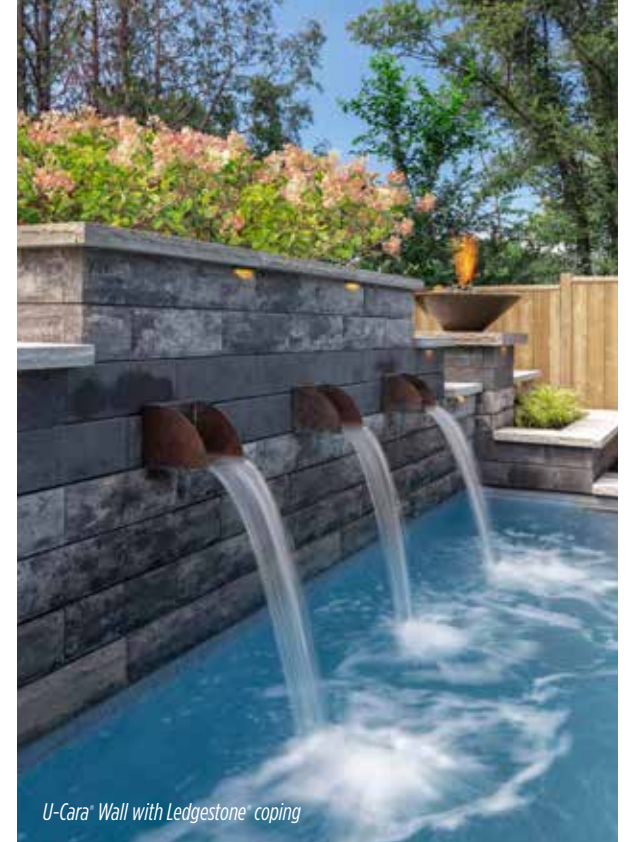
*Read all about the seven things you should consider when designing your outdoor kitchen.*



# Pillars & Water Features

---

Pillars add a sense of permanence and strength to your landscape design, creating visual interest with height variation and functionality. Pillars are great for creating a visual anchor to walls and a place for extra lighting. By adding pillars, you can take your project to the next level.



**Looking for Something Different?**  
Speak to your contractor about using Unilock products to build a custom feature that's just right for your project.



From fountains and ponds to waterfalls and custom water features, these soothing additions are a popular way to enhance your landscape design.



# Creative Ideas

The versatility of Unilock products provides a playground for your imagination. From mixing patterns and colors to create a custom sports court, to utilizing Unilock wall systems to beautify a utilitarian window well, the possibilities are endless!



*U-Cara® Wall with Universal coping*



*Brussels Dimensional Stone®  
with Town Hall® accent*



This small storage area becomes a thing of beauty, paved with Unilock Beacon Hill™ Smooth and Universal Coping treads.





# Learn & Plan

**With the right help,  
knowledge and  
preparation, you can  
turn your ideas into  
bold, exciting reality.**

---

You want a dramatic look that sparks curbside conversation. If getting there seems daunting, turn to our people, plans and tools. We've got you. And you've got this.







# Learn About Unilock Coatings & Finishes

Discover the perfect combination of Unilock features and finishes for your next project. No one offers a wider variety of surface treatments than Unilock. Find your perfect match here.



The more you know, the more you'll understand why Unilock is the best choice of all.



# Coatings & Finishes

## EasyClean™



Available only on EnduraColor products, EasyClean enhances the surface color and provides integral protection from stains. Unlike after market sealers, it does not need to be re-applied.

## ClassicCoat™



These factory-sealed, Classic thru-mix pavers save you the time and hassle of after market sealing and help protect the product's color and surface texture from wear.

## SOFT TOUCH



The ultra-smooth and silky surface texture of these products is achieved with a special finishing process that results in a luxurious surface that feels soft underfoot.

## ANTIQUED FINISH



Different methods are used to achieve this distressed, timeworn finish on different products, but in every case this patina enhances the look.

## ARTISTA



The look of boldly mottled granite is achieved with this proprietary process called Artista.

## BRUSHED FINISH



Only Unilock offers this unique surface, enhanced with graphically interesting etched lines.

## EXPOSED GRANITE



Granite, Quartz and Marble particles are embedded in the surface of the product and then revealed using additional processing methods.

## REVELA



These products are enhanced using a special process to reveal a variety of unique colors and textures on the surface.

## COLORFUSION™



The look of natural granite is achieved when color and granite particles are randomly dispersed using proprietary ColorFusion technology to achieve a unique mottled surface.







# Unilock Wall Reference Guide

UNILOCK WALLS	Classic	EnduraColor	StoneMark	ColorFusion	Two-Sided	Garden	Engineered
Brussels Dimensional Stone®	•				•	•	
Lineo™ Dimensional Stone	•				•	•	
Pisa2®	•					•	•
Pisa Smooth™	•				•	•	•
SienaStone™	•						•
SienaStone Smooth	•				•		•
U-Cara®		•		•	•	•	•

STEPS	Classic	StoneMark	Reala	Natural
Ledgestone™		•	•	
SienaStone	•			
SienaStone Smooth	•			
Natural Stone Sandstone				•
Natural Stone Limestone				•

# Coping pairings

UNILOCK COPINGS	Ledgestone	Universal Coping	Natural Stone	Brussels Fullnose	Pisa	Umbriano Coping
Brussels Dimensional Stone	•	•	•	•		•
Lineo Dimensional Stone	•	•	•			•
Pisa2		•	•		•	
Pisa Smooth	•	•	•	•	•	•
U-Cara	•	•	•			•



# Learn About The Process



Now that you've been inspired by our many different products and ideas, it's time to get down to the nitty gritty. We want you to have all of the information you need to make your project a huge success.



*Scan here for your  
Project Planning  
Guide and helpful  
Contractor Checklist.*

## Consumer Rebates

Learn how you can get  
up to **\$1000** in rebates.



**Scan here for full  
detailed information.**

*Call 1-800-UNILOCK or visit [Unilock.com](http://Unilock.com) for more  
informations and to download the rebate form.*





## Unilock Idea Center



See Unilock products in life-like settings



Talk to knowledgeable helpful staff



Take home **free** product samples

Whether you're looking to create a simple front entry or a complete outdoor living installation, no project is too big or too small for Unilock! Visit our Outdoor Idea Center to see our products in life-size installations, and let our Customer Service staff help you create your dream project plan.

**We're here to help you** every step of the way.

**Unilock Outdoor Idea Center** 287 Armstrong Ave, Georgetown, ON L7G 4X6

**U VISION**  
3D LANDSCAPE CREATOR

While there are many contractors and designers who still prefer to draw by hand, more and more plans today are being created digitally and in 3D.

If you're having trouble imagining what your project will look like when it's complete, a 3D design can really help.



**3D Rendering** Created with Uvision® 3D Design Software

Speak to your contractor about how 3D design can help you visualize the possibilities for your project!



# Construction Process

---

The quality of the work that's done to prepare the base for your pavers and walls is extremely important. A proper base ensures that your pavers and walls won't shift out of place during freeze/thaw cycles.



## STEP 1 | EXCAVATION

*The first step in any project is excavation of grass and topsoil. The depth will depend on two factors:*

1. **Soil Type** - Clay soil requires deeper excavation; sandy soil requires less.
2. **Use** - Heavy loads like driveways and retaining walls require deeper excavation; lighter loads like patios and walkways require less.

*Depth of excavation can be reduced significantly if a layer of DriveGrid™ is placed at the bottom of the excavation before the gravel gets placed. Loose subsoil resulting from the excavation process should always be compacted before DriveGrid and gravel are placed.*

## STEP 2 | GRAVEL BASE

*The excavated area will be filled with a gravel base. This gravel base needs to be:*

- > **Strong enough** to handle the load of whatever is placed on the surface.
- > **Free draining** so that water drains out of the base into the subsoil. Retaining walls may require a perforated drain pipe in the gravel base to direct water away from the base of the wall.
- > **Extended** at least six inches beyond the edges of the finished paver surface.
- > **Compacted** in several layers, using the proper equipment.



*Learn about frequently used terms in the hardscape and landscape industry.*



## STEP 3 | BEDDING LAYER

A 1" (25mm) layer of sand or tiny stone chips is spread out and smoothed on top of the solid gravel base. This layer allows paver or wall units to be leveled or sloped for smoothness and drainage.

Some contractors may recommend a poured concrete surface instead of a typical bedding layer, which is fine as long as the concrete is accurately poured and sits on a stable and well-drained base.

**Note:** *Once concrete is poured, the height of paver or wall units can no longer be adjusted.*

## STEP 4 | RESTRAINT SYSTEM

For pavers, an edge restraint will be secured with long metal spikes or a concrete edge will be installed to prevent perimeter pavers from drifting out. For walls, glue may be used to secure rows of blocks. Larger retaining walls may require geogrid every few layers to secure the wall into the soil that is being retained.



## STEP 5 | JOINT MATERIAL

The color you choose for joint material impacts the overall aesthetic. It also plays an important role between pavers by keeping out weeds and other debris. Your contractor can help you decide which joint material is right for your project.

There are two types of joint material to choose from:

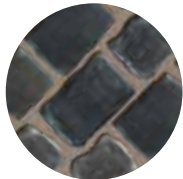
**Basic Jointing Sand** – Years ago, this was the only joint material available. As it wears away, issues with weeds could arise. If you choose a basic sand, we recommend that you use a joint stabilizing sealer and be prepared to replenish the sand when needed.

**Polymeric Sand** – This special sand stays in place longer because it is combined with a binding agent. However, it's not right for every project and needs to be installed with care to prevent hazing.

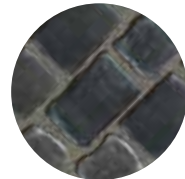
**Resin Sand** – Resin Sands are the most durable jointing material on the market and have been proven to be the longest lasting jointing sand material. There are different resin sands for different applications.



BLACK SAND



TAN SAND



GREY SAND

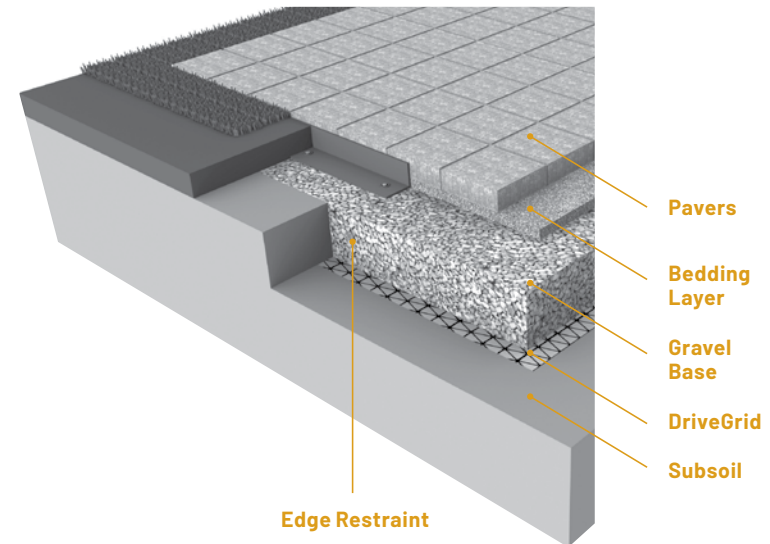
## STEP 6 | SEALING

Unilock pavers will be durable with, or without, a sealer. Some homeowners choose to apply a sealer to enhance the color of the pavers, while others choose to appreciate the color of the pavers as they age. Some Unilock pavers are sold factory sealed. If you choose to seal, you should plan to re-seal every 3-5 years.

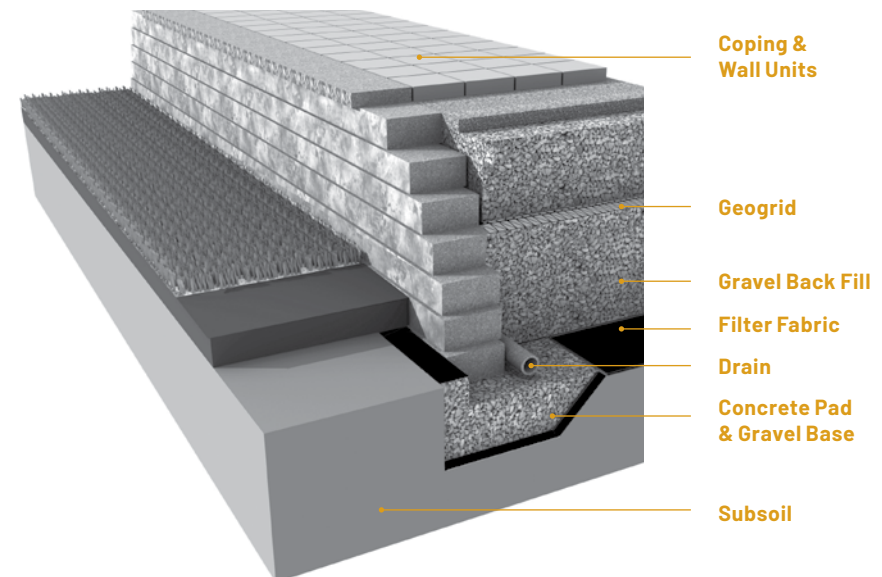
### Factory-Sealed Products

Elegance® Pavers and Unilock pavers manufactured with EasyClean™, have been pre-sealed in the factory and do not require sealing after installation. To clean and brighten the surface at any time, a gentle power washing of the surface is recommended. If you still wish to re-seal the surface, you must wait a minimum of 3 years before applying sealer. Only use solvent-based sealers.

## PAVER CONSTRUCTION



## WALL CONSTRUCTION





# Finding the Right Contractor

---



Choosing the right contractor for your project is the most important decision of all because even the best materials can be spoiled by poor installation and workmanship. Be sure to ask the right questions and keep in mind that the cheapest quote is rarely the best option.

## NEED HELP FINDING A QUALIFIED CONTRACTOR?

Our Referral Program will match you with a highly competent contractor who meets the rigid standards we impose to ensure the best quality work and results. Simply contact us online, by phone or at one of our locations and we'll help you find a contractor guaranteed to do the job right.



*Register online at [Unilock.com](https://www.unilock.com) and we'll match you with a Unilock Authorized Contractor in your area.*





# 8 Tips for Choosing A Contractor



## 1 WORKMANSHIP

- > Ask to see projects the contractor completed more than two years ago so you can see how their work holds up over time.
- > Are the pavers laid in a way that minimizes awkward cuts?
- > Are the curves of the project cut in a way that minimizes large gaps?
- > Have edge restraints been used and still in place?
- > How long does the contractor guarantee the work?
- > How many warranty claims has the company had in the past two years?

## 2 SUB-CONTRACTING

- > Some contractors will hire other companies to perform parts of the work, like lighting and irrigation. Be sure to ask the contractor about these sub-contractors and how they will be managed.

## 3 RELEVANT EXPERIENCE

- > How long has the contractor been installing pavers and walls?
- > Has the contractor installed projects in the past with the features you're considering (eg. a raised patio, retaining wall or water feature)?

## 4 BASE PREPARATION

- > What are the contractor's base preparation methods?
- > What materials are used and why?
- > Is there a standard procedure for base preparation or will the contractor assess your site's unique needs?

## 5 TIMING

- > Ask the contractor how far in advance they are booking projects and how long your project might take.
- > What are the contractor's payment terms?
- > Is an upfront deposit required to secure the timing of the project?

## 6 DOCUMENTATION

- > Does the contractor have the proper licensing for their work?
- > Does the contractor have liability insurance and are employees covered by Workers Compensation?
- > Will there be permits required for the job and if so, who is responsible to secure them?

## 7 COMPATIBILITY

- > Do you like this contractor? Can you easily communicate and understand each other? Is this someone you can trust?
- > Ask if the person you're meeting will be on site throughout the project or if someone else in the company will be your day-to-day contact person.
- > Contacting references can help you understand how the contractor operates throughout a project.

## 8 DESIGN

- > Does the contractor offer a design service? Is there a cost for this?
- > Is the design hand-drawn or rendered in 3D?
- > Are the contractor's designs something you would like for your project?



# Protect Your Investment

Learn how to take care of your Unilock products to ensure that they stay beautiful and functional for years to come.



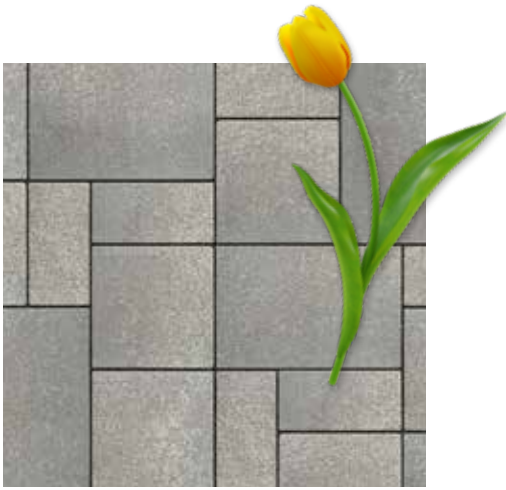
## Prevent weeds before they take root

When a proper base is installed, there is no soil directly beneath your pavers for weeds to grow. However, if the joints are not kept full with jointing material, it is possible for dirt and weed seeds to blow in from the surrounding area and germinate in the joints.

**IN THE PAST** - a basic sand was the only jointing material available. Unless it was replenished regularly, rain would erode the sand, leaving joints vulnerable to weeds.

**TODAY** - new varieties of sand-stabilizing compounds and polymeric jointing material are available which relieves homeowners from this maintenance burden. See page 161 for more information on jointing material choices.





## Spring Maintenance

Although most Unilock products are designed to be low maintenance, there are a number of preventative maintenance steps that can be performed each spring to ensure that your project keeps its pristine appearance throughout patio season.

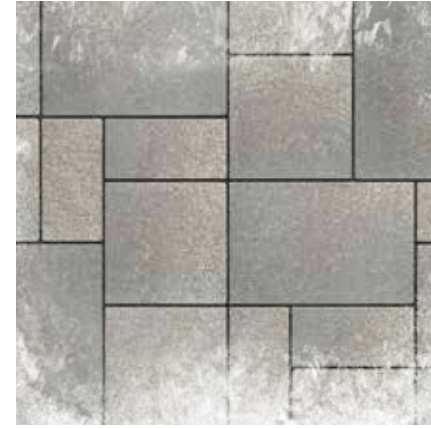
Check for “creep” – this is where the stones push out (due to winter stress, traffic or failure of the edge restraint), dips, deformations or stains. Should you discover any of these problems, they are all fixable.

Visit [Unilock.com](https://www.unilock.com) or speak to our friendly Unilock staff to find solutions.



## Fall Maintenance

The most important thing to do in the fall is to keep leaves and other debris off your stones. Remove any plant pots, furniture, urns and BBQs that can leach rust onto your surfaces.



## Winter Maintenance

While Unilock products are de-icing salt-resistant, it is highly recommended to use calcium-based products or rock salt (sodium chloride) to melt ice. Use a plastic shovel and plastic blade protectors on snow plows or blowers to protect the surface.

**NOTE: Avoid magnesium-based de-icing products as they are very aggressive and may cause damage to the concrete surface.**



Search our knowledge center for more FAQ's.

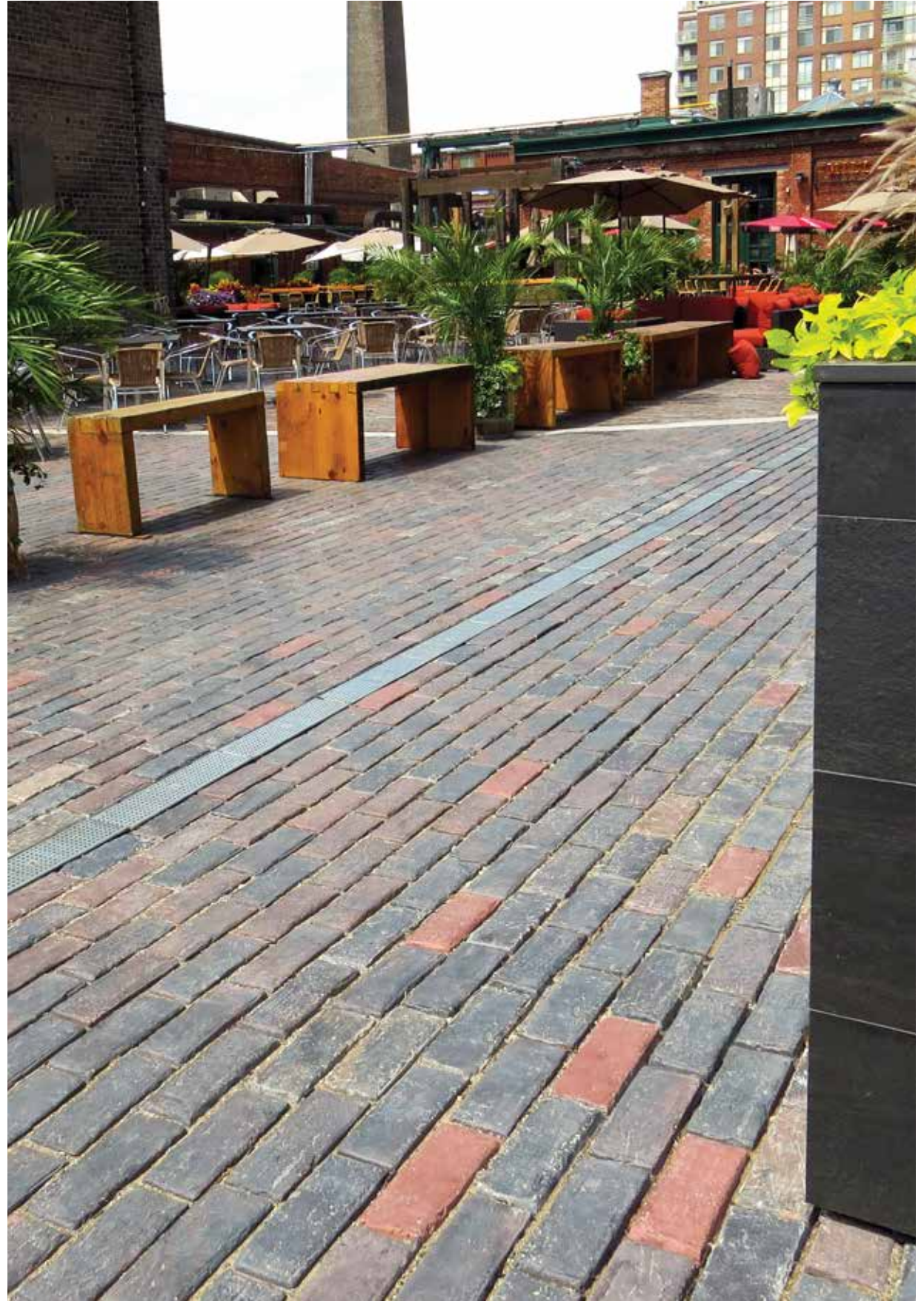


# The Choice of Design Professionals

Distillery District, Toronto, ON  
Designer: The Planning Partnership

The same Unilock products available to homeowners have been relied upon by architects, landscape architects and engineers for decades, to create world class commercial spaces across North America.

Like a good artist chooses only the best paint, the very best contractors use exclusive Unilock colors, textures and styles to showcase their creativity and workmanship.







**Indianapolis Motor Speedway,  
Indianapolis, IN**  
Designer: Browning Day Mullins Dierdorf

**Pier 4, Boston, MA**  
Designer: Mikyong Kim Design



**White Plains Public Library, White Plains, NY.**  
Designer: IQ Landscape Architects



# Our Quality Commitment

---

Unilock was the first concrete paver manufacturer in North America to offer a Lifetime Guarantee, and since then we have continued to stand behind it to ensure customers are completely satisfied with our products. With almost 2 billion stones in the ground, that's quite the commitment!

Our products are better and stronger than other brands. In fact, our internal standards of manufacturing in the USA and Canada far exceed industry standards set by ASTM (American Society for Testing and Materials) and CSA (Canadian Standards Association) and other European organizations.



## LIFETIME GUARANTEE - RESIDENTIAL

Our Transferable Lifetime Guarantee warranties the structural integrity of Unilock concrete paving stones and retaining wall units when used in residential applications. It covers any structural failure or deterioration of the concrete unit resulting from normal use or from the reasonable application of sodium chloride (common rock salt used for de-icing). StoneMark™ products have the same warranties as Unilock paving stones and retaining walls, but cannot be warrantied against damage resulting from de-icing products.

Any materials installed and maintained to our guidelines, and subject to normal wear, that prove defective, will be replaced without cost. Proof of purchase is required. Customers are encouraged to submit receipts to us as soon as their project is complete, using the Unilock Warranty Registration Form on our website (Unilock.com).

Purchasers need to ensure that the product they purchase is appropriate for their intended application; for example, only certain thicknesses of products are appropriate for driveways. Color matching of the replacement product and/or lost time cannot be guaranteed and labor costs related to installing replacement product is not included. Unilock reserves the right to seek a professional diagnosis and opinion to determine the exact cause of the product failure. If the failure falls within our warranty parameters, Unilock will replace the defective product.

**EXCLUSIONS** – Unfortunately, some things are beyond the control of Unilock, and are therefore not covered by this warranty. These include: naturally occurring efflorescence, hazing from polymeric jointing sand, scratching and chipping resulting from snow removal or construction equipment,

damage caused by natural or un-natural disasters, or negligence by anyone other than Unilock. The Unilock warranty also does not cover deterioration or damage as a result of poor design or poor installation practices that are contrary to specifications as laid out by ICPI (Interlocking Concrete Pavement Institute) and the NCMA (National Concrete Masonry Association). For more information please visit [www.icpi.org](http://www.icpi.org) and [www.ncma.org](http://www.ncma.org). Additionally, please refer to the Maintenance, Color and Installation Advisories.

## MAINTENANCE ADVISORY

### 1. Cleaning and Sealing

As with anything that is outdoors, Unilock products are subject to harsh weather, dust, acid rain, leaf stains, water stains and general wear from foot or vehicular traffic. Therefore, periodic cleaning using environmentally safe detergents designed for cleaning concrete is recommended to maintain a bright, fresh appearance.

To make subsequent cleaning easier and more effective, a concrete sealer can be applied to new or cleaned products to help prevent the penetration of substances that can cause stains.

There are many types of concrete cleaners and sealers on the market. Always read the instructions carefully before using the product to make sure that it will function as expected. Testing first, in a small unobtrusive area, is always a good idea to ensure the results are acceptable. Consult your local hardscape dealer to find the products best suited for your paver or wall installation.



*Visit [Unilock.com](http://Unilock.com) to register for your Transferable Lifetime Guarantee.*



## 2. Winter Maintenance

Snow removal by way of metal blades on plows or shovels will scratch and chip the surface of pavers, causing permanent damage. To mitigate this risk, metal snow clearing blades must always have a polyurethane or rubber cutting edge attached when plowing pavers.

**De-icing Salts** - The use of de-icing products on paver surfaces is important for safety and to help mitigate snow accumulation. Most de-icing products will have some effect on concrete, even if the product label indicates that it is safe on concrete. If you must use a de-icing product, we recommend that you use Sodium Chloride (ordinary rock salt) or Calcium Chloride (for colder climates). Always apply sparingly. The use of de-icing products on StoneMark, wet-cast pavers, slabs or coping may damage the product and therefore is not recommended. Whenever possible use a coarse sand as an anti-slip measure instead of de-icing chemicals.

### COLOR ADVISORY

#### 1. Selection

Due to the inherently variable nature of printed materials and digital monitors, Unilock cannot guarantee that products will match the color of printed or online images. Therefore, when making final product selections, decisions should be made based on actual stones which are readily available from Unilock, Authorized Contractors or Authorized Dealers. Most Unilock products are not comprised of a single color, but rather contain blended colors for a more natural appearance. This means that there will be significant color variance from stone to stone, so purchasers should view multiple units together to get a more accurate impression of the overall color.

*Note:* Unilock Natural Stone variations are outside the control of Unilock. Purchasers of natural stone must be willing to accept this inherent variability.

## 2. Pre-installation checking

Always check the label to ensure that the Unilock product delivered to your project is the product and color ordered. If there is a discrepancy, or if the product inside the packaging doesn't appear to be correct, contact your hardscape dealer before installing any pavers or wall units. If the product is installed, it indicates your acceptance of the products as delivered.

### 3. Blending

If the project requires more than one bundle of product it's always a good idea to draw product from several bundles when installing, as this ensures that any variation between bundles will be seamlessly integrated in the project. When bundles are from different production runs, random selection from multiple bundles is even more important.

### 4. Efflorescence

Efflorescence is a naturally occurring process that may appear as a white or light grey powder on the surface of concrete, clay or natural stone. It is temporary, and will disappear over time. However, if it is bothersome, an efflorescence cleaner can be used to remove it. There is no way to predict or prevent efflorescence. Because it does not compromise the structural integrity of the product, it is not covered by Unilock product warranties.

### INSTALLATION ADVISORY

#### 1. Construction Residue

While a certain amount of dirt on pavers and walls is inevitable during the construction phase, installers are strongly encouraged to clean as they go as construction residue can embed in the surface and become difficult to remove. The slurry produced during wet-saw cutting is particularly stubborn to clean if allowed to dry on the surface of pavers. Unilock warranties do not cover stains caused by a failure to remove construction residue.

## 2. Polymeric Haze

Surface hazing caused by polymeric jointing sand is not the responsibility of Unilock. Polymeric jointing sand should only be installed by an experienced and knowledgeable contractor. Any sand that is left on the surface prior to activation will result in a haze that is very difficult and time-consuming to remove. Only the highest quality, brand name polymeric sand that is guaranteed by the manufacturer should be used.

### 3. Compaction Damage

Both smooth and textured paver surfaces can be scratched by compaction equipment used to 'flatten' a new paver installation. Therefore, metal plate compactors must be fitted with a polyethylene mat to protect the paver surface from becoming scratched, or a superior option is to use a rubber-roller compactor instead. Damage to product surfaces caused by failure to follow these instructions is not covered by Unilock product warranties.

### FIRE PIT WARNING

Wood-burning fire pits must be lined with a proper metal insert or refractory (fire-rated) brick to protect the concrete components from extreme exposure to heat. Extreme heat on a concrete surface may affect the structural integrity of the concrete and can be dangerous. The floor of the fire pit should always be constructed using refractory brick or a sand bed. For your safety, always use a spark screen over the fire.





# Index

## PAVERS & SLABS

Arcana™ Slab	109...36
Beacon Hill™ Flagstone 60mm	63...120
Beacon Hill Flagstone 80mm	65
Beacon Hill Smooth 60mm	67...34, 46
Beacon Hill Smooth 80mm	69
Beacon Hill Smooth Slab	110...17, 24, 27, 42
Brussels Block®	58
Copthorne®	103...27, 30, 44
Courtstone®	95...18, 30, 43-44
Eco-Priora™	60
Eco-Promenade®	60
Granito™	75
IL Campo®	72
Mattoni™	71
Metro Slab	106
Natural Stone Slabs	116-119...44
Northshore	61
Porcelain Tile Slabs	115
Promenade™ Plank Paver	77...46
Promenade Plank	107
Revela™	79
Revela Slab	114
Richcliff®	91...6, 18, 30, 44
Richcliff Slab	111
Senzo™	80
Series™	73...17, 38, 46
Soreno™ Slab	108
Treo® Smooth	59
Town Hall®	99...20, 28, 40, 49, 53
Tribeca Cobble™	81
Umbriano® 60mm	83...20, 22
Umbriano 70mm	85...15, 26, 28, 32, 38-41, 53
Umbriano 80mm	87
Umbriano 100mm	89
Umbriano Slab	113...26
Windermere™ Flagstone	55
Windermere Smooth	57

## RETAINING WALLS AND VERTICALS

Brussels Dimensional Stone®	130
Lineo™ Dimensional Stone	129...22, 24, 34
Mackinaw™	125
Pisa2®	131
Pisa Smooth™	133
SienaStone™	134
SienaStone Smooth	135
U-Cara®	123...16, 28, 3, 46, 120, 136
U-Cara Modular System	126
U-Cara Wall Mount System	127

## STEPS, TREADS, COPING & CAPS

Brussels Fullnose™	58
Ledgestone™ Coping	140...18
Ledgestone Steps	138
Natural Stone Coping	141...31
Natural Stone Steps	139
SienaStone™ Steps	138
SienaStone Smooth Steps	138
Pisa2® Coping	140
Universal Coping	140...136
Umbriano Coping	140...38

### ON THE COVER:

**Pavers:** Beacon Hill Smooth (Opal Blend) with Series accents and Promenade Plank Paver inlays  
**Seat Wall, Pillars, Grill Island and Fire Feature:** U-Cara Smooth (Opal Blend) with U-Cara Series (Black Granite) accent and Natural Stone coping

## TOPICS OF INTEREST

Borders and Banding	144
Coatings & Finishes	154
Classic	50...54-59, 106
ColorFusion™	13...82-89, 113, 123
Construction Process	160
Coping	140-141
Coping Pairings	157
EnduraColor™	50...60-89, 107-114
Elegance™	50...90-105
EasyClean™	12...61, 71, 75, 80, 82-89, 108-109, 113
Fire Features	146...22, 25, 35, 47
Joint Material	161
Maintenance	164
Outdoor Idea Center	159
Outdoor Kitchens	148...22, 24, 37, 120
Paver Reference Guide	156
Permeable Pavers	51...59-60, 81, 101
Pillars	150...17, 22, 35
Reala™	11...90-105
Retaining Walls	120-135
Sealing	161
Steps	138-139
Ultima™	10...90-105
Wall Reference Guide	157
Water Features	150...23

Unilock Ltd. and Hengestone Holdings, Inc. are the owners or authorized users of all trademarks used in this publication unless otherwise specified. Umbriano® are trademarks of Metten Stein + Design GmbH & Co KG used under license by Unilock®. Measurements throughout this portfolio are nominal. Not all products shown are available at all Unilock locations. Log on to Unilock.com for availability. Colors shown in this catalog should be used only as a guide. Colors should always be chosen from actual samples. Contact your local Unilock representative for color availability in your area.

©2022 Hengestone Holdings, Inc.





# UNILOCK®

# Idea Center

## See

An expansive display of Unilock products in a life-size outdoor setting

---

## Talk

To our knowledgeable staff and we'll help you create a plan to achieve the outdoor space you're dreaming about.

---

## Take

**FREE samples** of Unilock paver and wall products home with you.

*Please feel free to walk around and browse our Outdoor Idea Center at any time. Call 1-800-UNILOCK or visit [Unilock.com](http://Unilock.com) for more details and staff hours.*



See a virtual tour at

**Unilock.com**





**UNILOCK.COM | 1-800-UNILOCK**



**BOSTON**  
(508) 278-4536

**CHICAGO**  
(630) 892-9191

**MILWAUKEE**  
(262) 742-3890

**KANSAS**  
(913) 417-7985

**MICHIGAN**  
(248) 437-7037

**NEW YORK**  
(845) 278-6700

**MID-ATLANTIC**  
(202) 798-2060

**ONTARIO**  
(416) 646-9000

**CINCINNATI / KY / TN**  
(513) 202-0219

**OHIO/WESTERN PA  
/ WNY & CNY**  
(330) 927-4000

